



2024



CALDWELL[®]

PRODUCT CATALOG



 **CALDWELL**[®]

2024 **NEW PRODUCTS**

BALLISTIC PRECISION VELOCIRADAR™

The Caldwell VelociRadar Chronograph is precision redefined with cutting-edge Chirp radar technology. This is no standard chronograph, while most chronographs stop at only providing muzzle velocity the VelociRadar tracks bullets downrange offering the full picture of ballistic performance. Using these downrange velocity measurements, the VelociRadar calculates true muzzle velocity, the bullet's ballistic coefficient, and downrange energy. With this advanced ballistics data long-range shooters can make more accurate shots and hunters can know the effective range of their firearms. The VelociRadar has several other advantages over traditional light sensor chronographs. The VelociRadar is designed to sit next to the shooter, not downrange, eliminating the risk of bullet strikes. This design also doesn't require waiting for the range to stop firing for safe setup and adjustments. Traditional light sensor chronographs struggle indoors or in poor lighting conditions where radar can reliably track velocities no matter what the lighting. The 2.8" color screen is easy to read and provides shot information and settings menus. The included premium ball head tripod is the perfect height for shooting on the bench or prone and features a pivoting ball head design that allows for quick and easy target alignment. A recoil-activated trigger is included that mounts on the firearm for increased reliability when using the VelociRadar with suppressed firearms or at indoor or covered shooting ranges that affect the standard acoustic trigger's ability to reliably capture every shot. A built-in rechargeable Li-ion battery has a longer runtime and eliminates the need for replacing disposable batteries before each trip to the range. VelociRadar is also compatible with the free Caldwell app, allowing users to remotely control the chronograph, create new shot strings, store and name shot data, and adjust chronograph settings. Whether you're tracking high-velocity rifle bullets soaring beyond 4,000 feet per second or measuring arrows with pinpoint accuracy, get the full picture with a Caldwell VelociRadar Chronograph.



THE CALDWELL APP



"The Bluetooth" word mark and logos are registered trademarks owned by Bluetooth SIG, Inc. and any use of such marks by AOB Products Company is under license. Other trademarks and trade names are those of their respective owners.

PRODUCT# 1134904 • UPC# 661120259930



BALLISTIC PRECISION VELOCIRADAR™

SEE THE FULL PICTURE

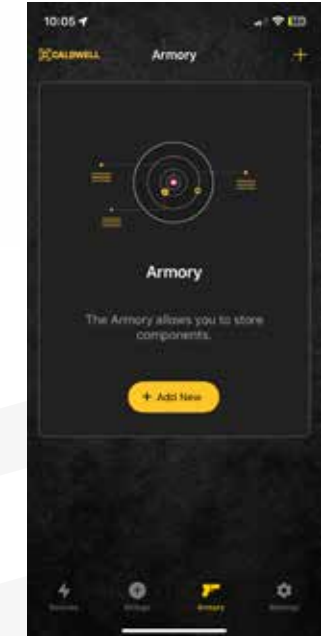
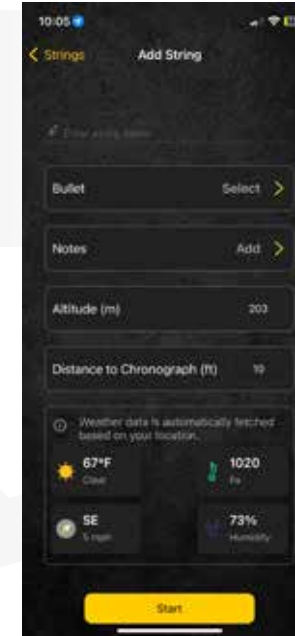
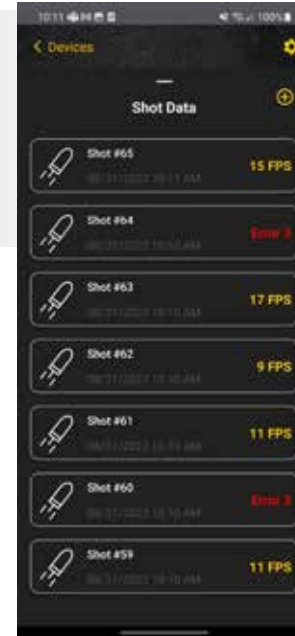
	MUZZLE VELOCITY	50YRDS	75YRDS	100YRDS
CALDWELL	FPS: 2900 (TRUE MV) FT-LB: 2020 G7 BC: .292	FPS: 2825 FT-LB: 1930 G7 BC: .292	FPS: 2785 FT-LB: 1885 G7 BC: .292	FPS: 2750 FT-LB: 1830 G7 BC: .292
COMPETITOR	FPS: ~2900 FT-LB: ??? G7 BC: ???	FPS: ??? FT-LB: ??? G7 BC: ???	FPS: ??? FT-LB: ??? G7 BC: ???	FPS: ??? FT-LB: ??? G7 BC: ???



- + RADAR DETECTION IS NOT AFFECTED BY LIGHTING CONDITIONS AND RELIABLE IN BOTH INDOOR AND OUTDOOR USE
- + MEASURE VELOCITY FROM THE BENCH ELIMINATING THE NEED TO GO DOWN RANGE FOR SETUP AND RISK OF BULLET IMPACT TO CHRONOGRAPH
- + STORE UP TO 100 SESSIONS WITH UP TO 100 SHOTS PER SESSION
- + PERFECT FOR RIFLES, SHOTGUNS, HANDGUNS, AIRGUNS, AND ARCHERY USE
- + CALCULATES TRUE MUZZLE VELOCITY WITH +/- 0.1% ACCURACY.
- + CALCULATES BALLISTIC COEFFICIENT TO CONFIRM MANUFACTURERS STATED B.C. FOR SPECIFIC LOADS
- + 2.8" COLOR SCREEN PROVIDES EASY-TO-READ VELOCITIES AND MENU OPTIONS
- + INCLUDED RECOIL-ACTIVATED TRIGGER FOR INCREASED RELIABILITY CAPTURING VELOCITIES WHILE USING SUPPRESSORS OR AT COVERED/INDOOR RANGES THAT AFFECT STANDARD ACOUSTIC TRIGGERS
- + INTERNAL RECHARGEABLE BATTERY SAVES MONEY AND OFFERS LONGER RUN TIME THAN DISPOSABLE BATTERIES
- + INCLUDED PREMIUM BALL HEAD TRIPOD FOR EASY TARGET ALIGNMENT ADJUSTMENT
- + EASY-TO-AIM SIGHT BUILT INTO HOUSING FOR PERFECT TARGET ALIGNMENT
- + FREE MOBILE APP ADJUST SETTINGS, DISPLAY AND STORE SHOT STRING DATA, MAX/MIN VELOCITY, AVERAGE VELOCITY, STANDARD DEVIATION, EXTREME SPREAD, WEATHER CONDITIONS, SHOTS FIRED, AND INDIVIDUAL SHOT VELOCITIES

DOWNLOAD THE APP!

Free mobile app to adjust settings and display and store shot string data, max/min velocity, average velocity, standard deviation, extreme spread, weather conditions, shots fired and individual shot velocities.



LEARN MORE

SCAN HERE WITH YOUR SMARTPHONE



- + FREE APP AVAILABLE FOR ANDROID AND IOS PLATFORMS
- + DISPLAY IMPORTANT INFORMATION LIKE VELOCITY, SHOT COUNT, AVG. VELOCITY, MIN/ MAX VELOCITY, EXTREME SPREAD AND STANDARD DEVIATION
- + SAVE AND NAME SHOT STRING WITH IMPORTANT BALLISTIC DATA, WEATHER CONDITIONS AND NOTES
- + STORE FIREARMS AND AMMUNITION PROFILES
- + CONTROL AND ADJUST SETTINGS IN THE CHRONOGRAPH FROM YOUR SMART DEVICE

VELOCIRADAR™ TRIPOD

Unlock the full potential of your VelociRadar™ Chronograph with the VelociRadar Tripod. A compact folding design offers easy storage and is the perfect height for using the chronograph on a shooting bench or while shooting prone from the ground. The VelociRadar Tripod's ball head design ensures swift, and precise chronograph-to-target alignment for reliable bullet tracking. Maximize the capabilities of your radar chronograph with the VelociRadar Tripod.

- + STANDARD ¼-20 THREAD COMPATIBLE WITH VELOCIRADAR CHRONOGRAPHS
- + SHORT HEIGHT IS PERFECT FOR USE ON SHOOTING BENCHES OR WHILE PRONE
- + ADJUSTABLE BALL HEAD TO EASILY ALIGN VELOCIRADAR ON TARGET FOR BETTER RADAR AND BULLET ALIGNMENT



PRODUCT# 1204382 • UPC# 661120750963

VELOCIRADAR™ CARRY CASE

Protect your investment with the VelociRadar™ Carry Case. Made from EVA molded foam, this case keeps your chronograph dust free during storage and also protects it from damage while transporting to the range. Specifically designed to hold the VelociRadar chronograph, the case also holds accessories like a tripod and remote trigger. Keep your VelociRadar Chronograph and accessories protected and organized with the VelociRadar Carry Case.

- + EVA MOLDED CASE PROTECTS VELOCIRADAR CHRONOGRAPHS FOR TRANSPORT AND STORAGE
- + DESIGNED TO HOLD CHRONOGRAPH, TRIPOD, REMOTE TRIGGER AND OTHER ACCESSORIES



INSIDE DESIGN

PRODUCT# 1204383 • UPC# 661120750970

BALLISTIC PRECISION *LED LIGHT KIT*

This LED Light Kit is perfect for those wanting to use any of the Caldwell® Ballistic Precision Chronographs indoors or in low-light conditions. The kit includes everything needed to replace the original sun screens with new screens that have 32 bright LEDs built in. Easy-to-use lighted screens include a power cord that plugs directly into the side of the Ballistic Precision 2.0 Bluetooth Chronograph to power the lights. For the original Ballistic Precision Chronograph, a battery pack is included to power the lights. Upgrade your chronograph with the Ballistic Precision LED Light Kit.

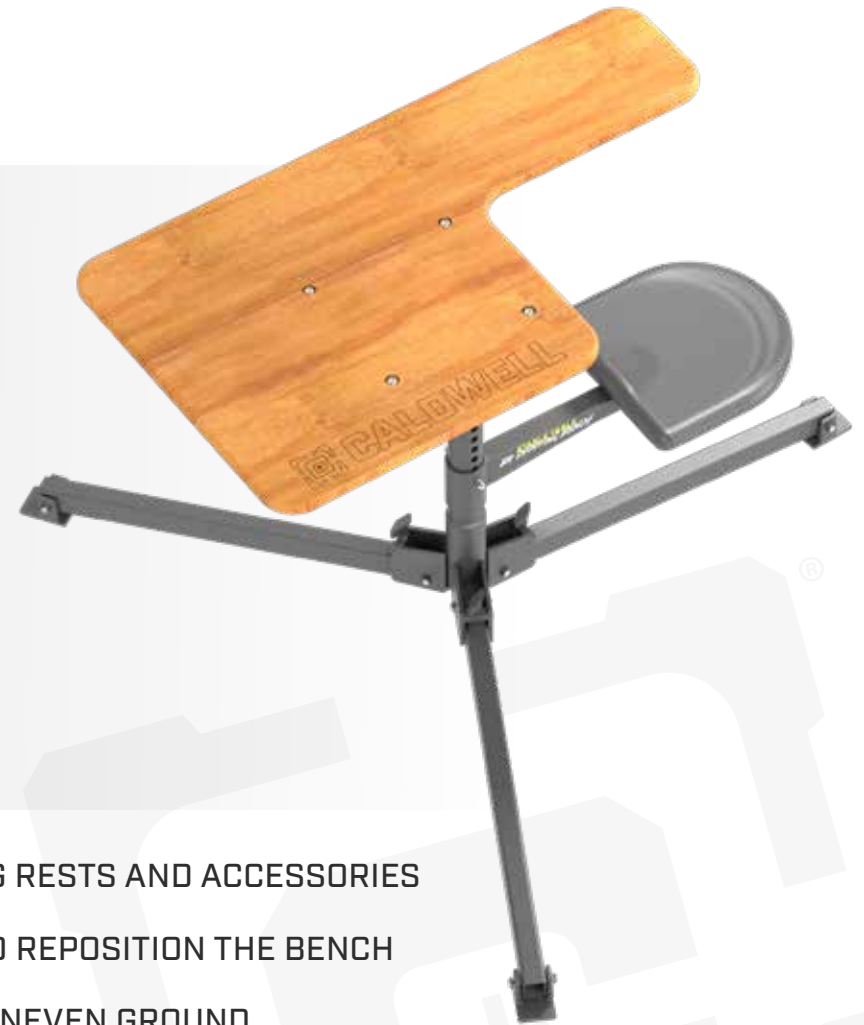
- + LED LIGHTS ALLOW CHRONOGRAPHS TO BE USED RELIABLY INDOORS OR IN LOW-LIGHT CONDITIONS
- + LIGHT KIT IS COMPATIBLE WITH BALLISTIC PRECISION 2.0 BLUETOOTH CHRONOGRAPHS AND ORIGINAL BALLISTIC PRECISION CHRONOGRAPHS
- + LIGHTS ARE POWERED BY CHRONOGRAPH WITH NO EXTERNAL POWER SOURCES NEEDED ON BALLISTIC PRECISION 2.0 WITH BLUETOOTH CHRONOGRAPHS
- + BATTERY PACK INCLUDED FOR USE WITH ORIGINAL BALLISTIC PRECISION CHRONOGRAPHS (USES 3 AA BATTERIES NOT INCLUDED)

**BATTERY PACK**

PRODUCT# 4002685 • UPC# 661120749370

STABLE TABLE® *BR SHOOTING BENCH*

The Caldwell® Stable Table® BR is the premium shooting bench in the Caldwell Stable Table family of shooting benches. The sturdy, precision machined steel frame provides a stable benchrest quality shooting platform. Featuring a oversized 45”x28” bench top made from premium laminated red oak to provide a non-slip surface for shooting rests that stays cooler on sunny days than plastic or composite type bench tops. The extra-large top has plenty of room for rests, bags, ammunition, and other accessories while shooting. A rotating 360-degree design increases the field of fire without requiring repositioning the shooting bench. The Stable Table BR is the only shooting bench featuring a patented leveling design that allows each leg to be leveled separately providing a stable foundation no matter the terrain. The all-weather seat is height adjustable for a comfortable shooting position for any shooter. Eliminate the variables that make you miss with the Caldwell Stable Table BR.



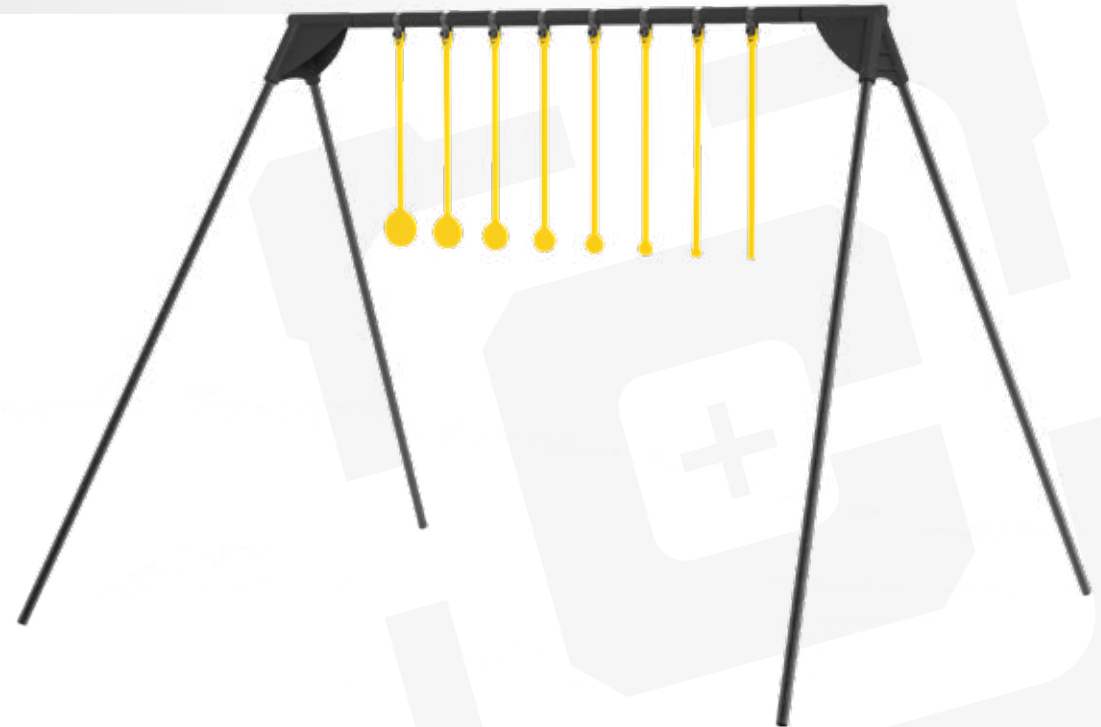
- + **OVERSIZED PREMIUM LAMINATED RED OAK TOP HAS PLENTY OF ROOM FOR SHOOTING RESTS AND ACCESSORIES**
- + **360-DEGREE ROTATING DESIGN ALLOWS A WIDE FIELD OF FIRE WITHOUT STOPPING TO REPOSITION THE BENCH**
- + **PATENTED LEVELING LEGS WITH ALL-TERRAIN FEET PROVIDE STABLE SHOOTING ON UNEVEN GROUND**
- + **ADJUSTABLE HEIGHT ALL-WEATHER SEAT PROVIDES A COMFORTABLE SHOOTING POSITION FOR SHOOTERS OF ALL HEIGHTS**

PRODUCT# 3005251 • UPC# 661120750468

KYL CHALLENGE TARGET

Caldwell® AR500 Rimfire KYL Challenge Targets are the perfect way to test your shooting skills and have fun competitions with friends. These targets are commonly referred to as KYL targets short for **"know your limits"**. This name comes from the 8 targets that range in size from 2" to 1/4" that are designed to test a shooter's skill. The most common way to use the target is for shooters to start with the largest target and accumulate points for each target they hit. If the shooter misses, they drop back to zero. This tests a shooter's ability to judge their limits and see how well they stack up against others. Targets are constructed of certified AR500 steel and can withstand a lifetime of impacts from any rimfire cartridge including 22 Magnum and 17HMR. The included stand uses 1/2" diameter steel tubing and durable polyurethane joints to set up quickly and take down for easy transport and storage. Get out to the range and test your limits with the Caldwell AR500 Rimfire KYL Challenge Target.

- + CERTIFIED 1/4" AR500 STEEL WITHSTANDS IMPACTS FROM ALL RIMFIRE CARTRIDGES INCLUDING 22 MAGNUM AND 17HMR
- + 8 TARGETS RANGING FROM 2" TO 1/4" DIAMETERS WILL TEST AND IMPROVE ANY SHOOTER'S SKILLS
- + MULTIPLE WAYS TO COMPETE IN FUN GAMES WITH FRIENDS AND FAMILY
- + COLLAPSIBLE STEEL TUBE FRAME WITH DURABLE POLYURETHANE JOINTS FOR EASY TRANSPORT AND SETUP
- + HIGH VISIBILITY YELLOW POWDER COAT PREVENTS RUST AND IS EASY TO SEE NO MATTER WHAT THE TERRAIN
- + BACKED BY CALDWELL AR500 LIFETIME GUARANTEE THESE TARGETS ARE BUILT TO LAST FOR TENS OF THOUSANDS OF ROUNDS



PRODUCT# 4002310 • UPC# 661120750482

KYL RING CHALLENGE TARGET

Caldwell® AR500 Rimfire KYL Ring Challenge Target is a new take on the traditional KYL design. Know Your Limit targets, or KYL, as they are commonly called allow shooters to hone their marksmanship skills and have fun competitions with other shooters to see how they stack up. This KYL target uses rings instead of the traditional solid paddle targets that decrease in size. There are five 3" diameter targets with holes in the middle of each, forming a ring target. The size of the hole in the target increases leaving a smaller ring target as they progress. The most common way to use the target is for shooters to start with the largest target and accumulate points for each target they hit. If the shooter misses, they drop back to zero. This tests a shooter's ability to judge their limits and see how well they stack up to others. Targets are constructed of certified AR500 steel and can withstand a lifetime of impacts from any rimfire cartridge including 22 Magnum and 17HMR. The included stand uses ½" diameter steel tubing and durable polyurethane joints to set up quickly and takedown for easy transport and storage. Get out to the range and test your limits with the Caldwell AR500 Rimfire KYL Ring Challenge Target.

- + CERTIFIED 1/4" AR500 STEEL WITHSTANDS IMPACTS FROM ALL RIMFIRE CARTRIDGES INCLUDING 22 MAGNUM AND 17HMR
- + 5 RING TARGETS WITH 3" OUTER DIAMETERS WITH INCREASING DIAMETER HOLES TO TEST AND IMPROVE ANY SHOOTER'S SKILLS
- + MULTIPLE WAYS TO COMPETE IN FUN GAMES WITH FRIENDS AND FAMILY
- + COLLAPSIBLE STEEL TUBE FRAME WITH DURABLE POLYURETHANE JOINTS FOR EASY TRANSPORT AND SETUP
- + HIGH VISIBILITY YELLOW POWDER COAT PREVENTS RUST AND IS EASY TO SEE NO MATTER WHAT THE TERRAIN
- + BACKED BY CALDWELL AR500 LIFETIME GUARANTEE THESE TARGETS ARE BUILT TO LAST FOR TENS OF THOUSANDS OF ROUNDS



PRODUCT# 4002309 • UPC# 661120750475

1/4" STEEL TARGETS



Caldwell® 1/4" AR500 Steel Plates are designed to take your shooting to the next level. Laser cut from certified AR500 steel, these targets offer unbeatable durability and performance for both beginners and seasoned marksmen. Capable of handling any rimfire or non-magnum handgun caliber firearm, Caldwell AR500 targets will last tens of thousands of rounds without damage. These 1/4" plates are lighter than thicker centerfire-rated steel plates, resulting in increased plate movement and a resounding ring upon impact; even with lower-energy shots. The targets come in 5 different shapes and sizes to add both fun and challenge to your shooting. We stand by the quality of our targets, which is why each Caldwell AR500 target comes with a lifetime guarantee. Whether you're a novice looking to refine your skills or a skilled shooter seeking a fresh challenge, Caldwell 1/4" AR500 steel targets are the go-to choice. Experience the thrill of hitting the mark and enjoy hours of dynamic shooting fun.



5" PLATE • PRODUCT# 4002311 • UPC# 661120750499

8" PLATE • PRODUCT# 4002878 • UPC# 661120750567

SODA CAN • PRODUCT# 4002314 • UPC# 661120750529

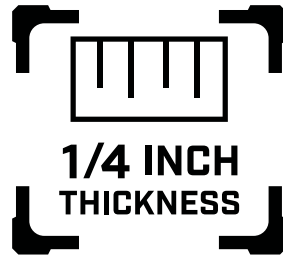
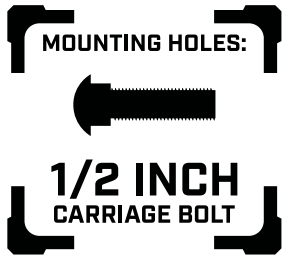
BOWLING PIN • PRODUCT# 4002312 • UPC# 661120750505

PRAIRIE DOG • PRODUCT# 4002313 • UPC# 661120750512

1/4" STEEL TARGETS



- + CERTIFIED 1/4" AR500 RATED FOR TENS OF THOUSANDS OF ROUNDS FROM ALL RIMFIRE AND NON-MAGNUM HANDGUN CARTRIDGES
- + HIGH VISIBILITY YELLOW POWDER COAT PREVENTS RUST AND IS EASY TO SEE NO MATTER WHAT THE TERRAIN
- + 1/4" AR500 PROVIDES INCREASED MOVEMENT AND LOUDER AUDIBLE RING FROM RIMFIRE AND HANDGUN CALIBER IMPACTS
- + 1/2" BOLT MOUNTING OPTION COMPATIBLE WITH ALL CALDWELL TARGET HANGERS
- + BACKED BY CALDWELL AR500 LIFETIME GUARANTEE, THESE TARGETS ARE BUILT TO LAST



CLAYMORE® SOLO



The Caldwell® Claymore® family of clay target throwers brings fun and innovation to shotgun shooting. The Claymore Solo is a compact, lightweight clay target thrower that offers several innovative features over the competition. A unique foot pedal design allows the Claymore Solo to tension the throwing arm spring and release the target in one smooth step, while keeping hands free and clear of the thrower. This foot pedal operation eliminates the need for a user to put themselves in harm's way while manually resetting the arm required by traditional thrower designs. The Claymore's arm automatically resets itself each time allowing the user to load a target while the arm has no spring tension applied. The Solo has quick, toolless launch angle adjustment to change the target path from straight away to practically vertical. The throwing arm is designed to work with standard, midi, and mini clay targets and can throw both singles and doubles. The Claymore Solo's folding legs reduce its footprint, making it easier to pack in the field and store in the garage when not in use. Get out and have some fun busting some clays with family and friends with the Caldwell Claymore Solo.



PRODUCT# 4002777 • UPC# 661120750543

CLAYMORE® SOLO

- + SAFE, HANDS-FREE LOADING WITH FOOT PEDAL DESIGN THAT TENSIONS THE SPRING AND THROWS THE TARGET IN ONE EASY PRESS KEEPING HANDS SAFELY OUT OF THE PATH OF THE THROWING ARM
- + AUTO-RESET ARM RETURNS TO THE LOADING POSITION AFTER EACH FIRING, MAKING LOADING THE NEXT TARGET FAST AND EASY
- + FOLDING LEGS ALLOW THE CLAYMORE SOLO TO COLLAPSE DOWN FOR EASY TRANSPORT TO THE RANGE AND COMPACT STORAGE WHEN NOT IN USE
- + TOOLLESS ANGLE ADJUSTMENT ALLOWS QUICK CHANGES FOR MULTIPLE TARGET PRESENTATIONS
- + VERSATILE DESIGN ALLOWS THE CLAYMORE SOLO TO THROW MINI, MIDI, AND STANDARD CLAYS BOTH AS SINGLES AND DOUBLES



FOLDING DESIGN

CLAYMORE® *PULL-PUP™*

The Caldwell® Claymore® Pull-Pup™ brings the power of a traditional clay target thrower and packs it into a compact handheld unit. The Pull-Pup can launch standard, midi, and mini clay targets over 55 yards; right on par with larger standard clay throwers. Dual grip safeties ensure that both hands are properly placed out of the path of the target and arm when released. With its handheld design, the thrower can easily change the angle of the target at will, allowing shooters to practice different angles and test their skills. A clip on the arm holds the target in place allowing the Pull-Pup to launch targets off-camber, for both traditional angles and on-edge target presentations. An open-front design allows for quick and easy clearing of any targets that may break while throwing without taking the thrower apart in the field. The Caldwell Claymore Pull-Pup will bring another level of fun to your range trips for both the trapper and the shooters.



PRODUCT# 4002774 • UPC# 661120750987

CLAYMORE® *PULL-PVP™*

- + UNIQUE DESIGN PUTS THE POWER OF A TRADITIONAL TARGET THROWER IN THE PALM OF YOUR HANDS
- + HANDHELD OPERATION ALLOWS THE THROWER TO ADJUST TARGET ANGLES ON THE FLY, TESTING THE SHOOTER'S SKILLS
- + BUILT-IN GRIP SAFETIES KEEP HANDS CLEAR OF TARGET AND ARM WHEN THROWING
- + ADJUSTABLE SPRING TENSION LAUNCHES STANDARD, MIDI, AND MINI TARGETS OVER 55 YARDS
- + OPEN FRONT DESIGN ALLOWS FOR QUICK AND EASY REMOVAL OF BROKEN TARGETS WITHOUT DISASSEMBLY
- + TARGET CLIP ON ARM HOLDS TARGETS IN PLACE FOR DIFFICULT ANGLED SHOTS



Make trips to the range even better with the Caldwell® Claymore® Carry Bag. This custom designed carry bag is perfectly sized to fit the Caldwell Claymore Target Thrower. With 2 Handles and a shoulder strap, this bag makes carrying the Claymore in the field easy with little user fatigue. The padded construction with a zippered closure keeps the Claymore protected from damage and dust-free during transportation and storage. Keep your Claymore in perfect working order for years of enjoyment with this Carry Bag.

- + CUSTOM FIT CARRY BAG WITH BOTH HANDLES AND SHOULDER STRAP MAKES RANGE TRIPS MORE ENJOYABLE
- + PADDED NYLON CASE WITH ZIPPER CLOSURE PREVENTS DAMAGE AND KEEPS THE CLAYMORE DUST-FREE DURING TRANSPORT AND STORAGE
- + DESIGNED TO EASILY FIT A FOLDED CLAYMORE TARGET THROWER



PRODUCT# 1204844 • UPC# 661120750949



 **CALDWELL**®
FEATURED PRODUCTS

BALLISTIC PRECISION *CHRONOGRAPH 2.0*

Whether you're testing load accuracy, monitoring the speed of your arrows, or ensuring your paintballs are within field regulation, the Caldwell® Ballistic Precision Chronograph 2.0 is the ideal tool for accurate velocity measurements. Capture shot velocity data via Bluetooth record environmental conditions and load data in the Caldwell app.

- + FACTORY CALIBRATED TO +/- 0.1% ACCURACY
- + IDEAL FOR FIREARMS, ARCHERY, AIRGUNS AND PAINTBALL
- + EXTRA WIDE SUN SCREENS FOR ADDED SHADING IN FULL SUN CONDITIONS
- + CONNECTS TO YOUR SMART DEVICE VIA BLUETOOTH

WORKS WITH



ARCHERY



FIREARMS




AIR RIFLE



THE CALDWELL APP

FREE MOBILE APP TO ADJUST SETTINGS AND DISPLAY AND STORE SHOT STRING DATA, MAX/MIN VELOCITY, AVERAGE VELOCITY, STANDARD DEVIATION, EXTREME SPREAD, WEATHER CONDITIONS, SHOTS FIRED AND INDIVIDUAL SHOT VELOCITIES.



 **Bluetooth**® “The Bluetooth” word mark and logos are registered trademarks owned by Bluetooth SIG, Inc. and any use of such marks by AOB Products Company is under license. Other trademarks and trade names are those of their respective owners.”

PRODUCT# 4001147 • UPC# 661120747482



BALLISTIC PRECISION *CHRONOGRAPH 2.0* **PRO KIT**

Whether you're testing load accuracy, monitoring the speed of your arrows, or ensuring your paintballs are within field regulation, the Caldwell® Ballistic Precision Chronograph 2.0 is the ideal tool for accurate velocity measurements. Capture shot velocity data via Bluetooth record environmental conditions and load data in the Caldwell app. Pro kit includes the chronograph, carry case, tripod and light kit.

- + FACTORY CALIBRATED TO +/- 0.1% ACCURACY
- + IDEAL FOR FIREARMS, ARCHERY, AIRGUNS AND PAINTBALL
- + EXTRA WIDE SUN SCREENS FOR ADDED SHADING IN FULL SUN CONDITIONS
- + CONNECTS TO YOUR SMART DEVICE VIA BLUETOOTH
- + KIT INCLUDES: CHRONOGRAPH, CARRY CASE, TRIPOD AND LIGHT KIT



WORKS WITH




ARCHERY



FIREARMS



AIR RIFLE

 **Bluetooth**® “The Bluetooth” word mark and logos are registered trademarks owned by Bluetooth SIG, Inc. and any use of such marks by AOB Products Company is under license. Other trademarks and trade names are those of their respective owners.”

PRODUCT# 4001146 • UPC# 661120747499

 PATS:aob.com/patents

 **THE CALDWELL APP**

FREE MOBILE APP TO ADJUST SETTINGS AND DISPLAY AND STORE SHOT STRING DATA, MAX/MIN VELOCITY, AVERAGE VELOCITY, STANDARD DEVIATION, EXTREME SPREAD, WEATHER CONDITIONS, SHOTS FIRED AND INDIVIDUAL SHOT VELOCITIES.



E-MAX[®] PRO COMMS

The E-MAX[®] Pro Comms combine Caldwell's unmatched hearing protection with Bluetooth communication ability via a high-quality ambidextrous boom microphone. Coming in at 23dB NRR and having an over 200 yard communication range, chat with multiple users on the range, listen to music, and protect your hearing simultaneously with the E-MAX Comms. Featuring an improved headband system to provide added comfort when wearing a hat - the headband is also removable to make the muffs helmet-mount compatible.

- + INTEGRATED RADIO ALLOWS FOR HANDS FREE COMMUNICATION WHILE STILL PROVIDING 23DB NRR HEARING PROTECTION
- + ALLOWS FOR CLEAR COMMUNICATION BETWEEN USERS OVER EXTENDED DISTANCE
- + BLUETOOTH[®] CONNECTIVITY FOR STREAMING MUSIC AND TAKING CALLS
- + 22 CHANNEL SETTINGS FOR MULTIPLE PARTIES WITHIN THE SAME AREA



LONG AND SHORT AMBIDEXTROUS MICROPHONE OPTIONS PREVENT CLEARANCE ISSUES WITH STOCKS



"The Bluetooth" word mark and logos are registered trademarks owned by Bluetooth SIG, Inc. and any use of such marks by AOB Products Company is under license. Other trademarks and trade names are those of their respective owners."

PRODUCT# 1136235 • UPC# 661120259978



E-MAX[®] LINK

The E-MAX[®] Link is an advanced Bluetooth communication device that enables communication between multiple users up to 12 miles (line of sight). The E-MAX Link pairs to your current hearing protection wirelessly via Bluetooth with compatible muffs, plugs, or with a 3.5mm audio cord for non-Bluetooth hearing protection. Included is a rechargeable battery (optional 3xAA use), with a USB-C charging cord. In the field or on the range, communicating with others has never been easier! Use the Link with any Caldwell electronic hearing protection, including E-MAX Power Cords, E-MAX Pro, E-MAX Pro BT, E-MAX Shadows and E-MAX Shadows Pro.

- + PAIRS WITH CALDWELL[®] BLUETOOTH[®] HEARING PROTECTION FOR WIRELESS COMMUNICATION
- + AUDIO PORT FOR CONNECTING TO ALL NON-BLUETOOTH CALDWELL E-MAX EARMUFFS
- + 12-MILE RANGE ALLOWS FOR LONG DISTANCE COMMUNICATION
- + 22 CHANNEL SETTINGS FOR MULTIPLE PARTIES WITHIN THE SAME RANGE



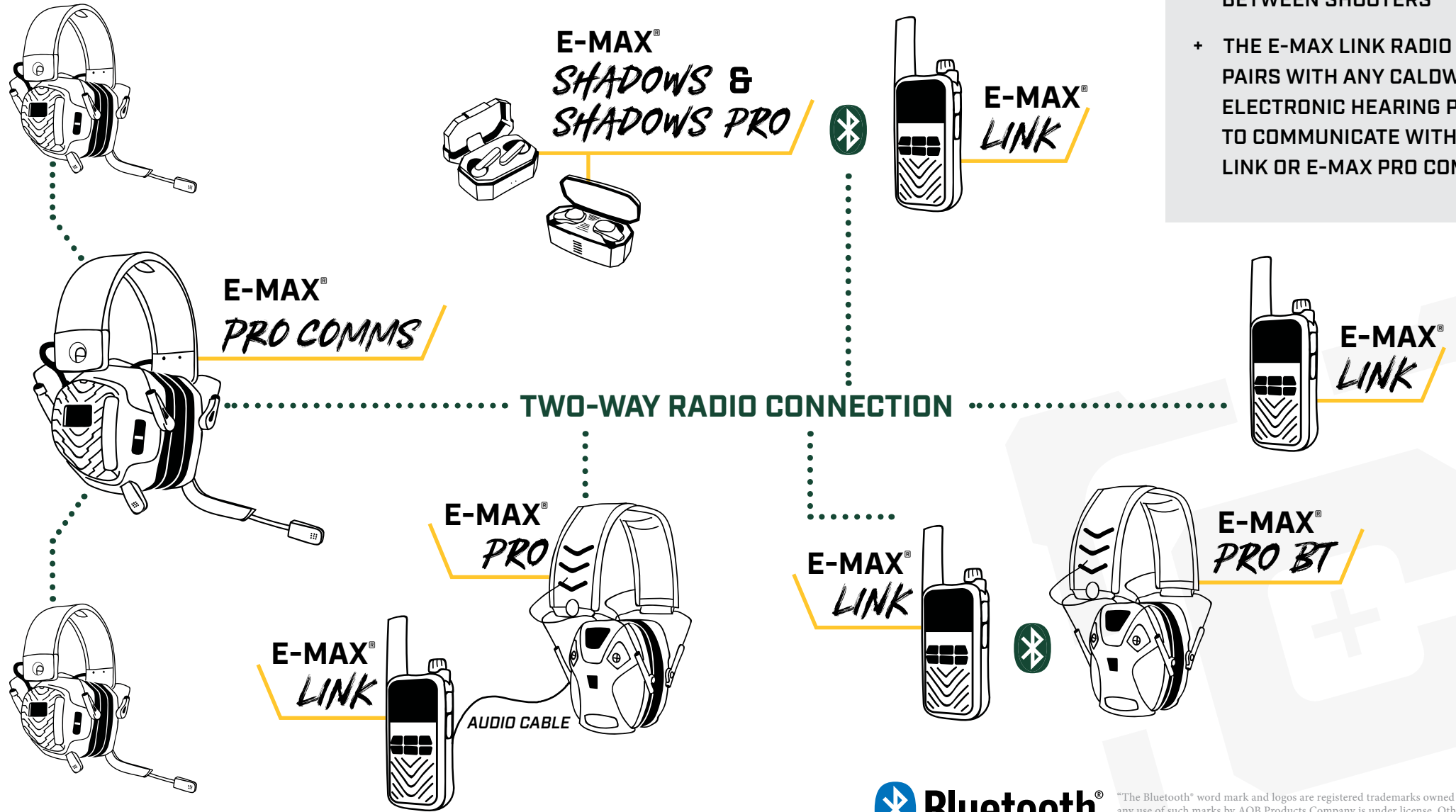
"The Bluetooth" word mark and logos are registered trademarks owned by Bluetooth SIG, Inc. and any use of such marks by AOB Products Company is under license. Other trademarks and trade names are those of their respective owners."

PRODUCT# 1142645 • UPC# 661120260004



E-MAX[®] FAMILY COMMUNICATION NETWORK

- + CALDWELL E-MAX PRO COMMS WITH BUILT-IN RADIO OFFER AN EASY-ON-RANGE COMMUNICATION NETWORK BETWEEN SHOOTERS
- + THE E-MAX LINK RADIO EASILY PAIRS WITH ANY CALDWELL E-MAX ELECTRONIC HEARING PROTECTION TO COMMUNICATE WITH OTHER E-MAX LINK OR E-MAX PRO COMMS USERS.



"The Bluetooth" word mark and logos are registered trademarks owned by Bluetooth SIG, Inc. and any use of such marks by AOB Products Company is under license. Other trademarks and trade names are those of their respective owners."

3/8" CERTIFIED AR500 STEEL FAMILY



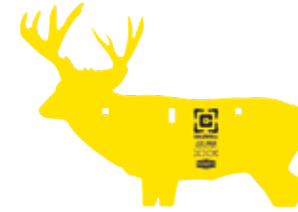
FULL SIZE IPSC
1116705
\$209.99



CROW
1001093
\$39.99



PRAIRIE DOG
4001099
\$34.99



33% DEER
4001096
\$139.99



COYOTE
4001073
\$209.99



66% IPSC
1116702
\$114.99



8" GONG
1116703
\$37.99



10" COFFIN
1116693
\$54.99



DUAL SPINNER TARGET
1196226
\$159.99



SWINGING TARGET
1187590
\$99.99



PORTABLE RANGE KIT W/ 8" GONG
1140016
\$114.99



33% IPSC
1116697
\$43.99



13" OCTAGON
1116695
\$99.99



5" GONG
1116700
\$19.99



AUTO RESET PRAIRIE DOG
1178561
\$109.99



AUTO RESET 33% POPPER
1178560
\$99.99

1/4" CERTIFIED AR500 RIMFIRE *FAMILY*



KYL RING CHALLENGE TARGET
4002309
\$99.99



KYL CHALLENGE TARGET
4002310
\$99.99



8" PLATE
4002878
\$24.99



5" PLATE
4002311
\$14.99



SODA CAN
4002314
\$9.99



BOWLING PIN
4002312
\$14.99



PRAIRIE DOG
4002313
\$19.99

AR500 TARGET ACCESSORIES



FLASH BANG
1198772
\$29.99



ULTIMATE STEEL TARGET STAND
4001148
\$39.99



STRAP HANGER SET
STANDARD : 1102671
\$21.99
X-LARGE : 1136058
\$27.99



T-POST HANGER
1102669
\$21.99



2X4 TARGET HANGER
1183600
\$24.99



PORTABLE TARGET STAND WITH STRAP
1136057
\$89.99

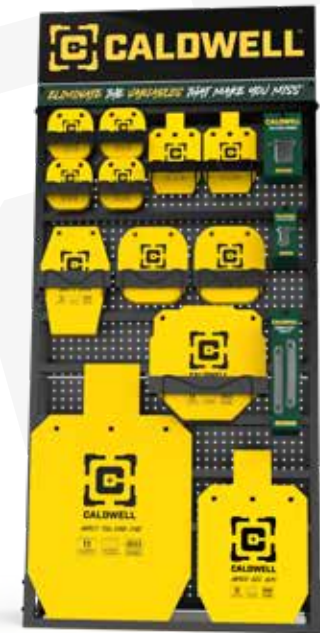


SHEPERD'S HOOK HANGER
3002281
\$29.99



AR500 TARGET POST
4001137
\$79.99

AR500 HALF SIZE DEALER KIT
1182824
\$1684.99



AR500 FULL SIZE DEALER KIT
1183600
\$2314.99

CLAYMORE[®] FAMILY



CLAYMORE[®]
1122187
\$329.99



SOLO
4002777
\$179.99



PULL-PUP
4002774
\$69.99

PACKAGING EXAMPLES





CALDWELL[®]

RETURNING PRODUCTS



CALDWELL
TACK DRIVER

CLAYMORE™ CLAY TARGET THROWER

PRODUCT# 1122187 • UPC# 661120081425

- + FOOT PEDAL POWERED, NO BATTERY REQUIRED TO OPERATE
- + 50 CLAY CAPACITY - MORE TIME SHOOTING, LESS TIME LOADING CLAYS
- + COMPACT FOLDING DESIGN FOR EASY TRANSPORTATION & STORAGE
- + SELECTABLE FLURRY MODE LAUNCHES CLAYS AS FAST AS YOU CAN STEP ON THE PEDAL

The Caldwell Claymore provides all the benefits of an electric clay thrower without having to tote a heavy battery around. This easy to cock, foot-operated manual device can throw clays 55-70 yards and can hold 50 clays in the target magazine. It features a standard mode and a flurry mode which allows for a continuous step-and-throw sequence that launches clays as fast as you can step on the pedal. To expand on the versatility of the Caldwell Claymore, it also features adjustable launch angles to provide multiple shot options for the shooter. The Claymore weighs only 35 lbs and is collapsible for easy storage and transport. Get out and shatter some clays either by yourself or with some friends with the Caldwell Claymore!



HYDROSLED™

PRODUCT# 1093568 • UPC# 661120417880

- + REDUCE FELT RECOIL UP TO 95% BY FILLING THE ON-BOARD RESERVOIR WITH WATER
- + RACK & PINION ELEVATION RAM ALLOWS FOR PRECISE ADJUSTMENTS WHEN DIALING IN YOUR SCOPE
- + EMPTY THE WATER WHEN FINISHED FOR EASIER PORTABILITY & STORAGE
- + CLEARANCE FOR DETACHABLE MAGAZINES

The Caldwell Hydrosled is the most innovative shooting rest on the market today, eliminating 95% of felt recoil. The Hydrosled has the ability to fill an onboard reservoir with your choice of media. There is no longer the need to carry heavy lead bags or weights to the range. Simply fill the 2-gallon reservoir with water, sand or pebbles, and you are good to go. Hydrosled is adjustable to accommodate nearly all rifles and shotguns including lever action rifles and AR platforms with detachable magazines. This shooting rest utilizes a proven rack and pinion elevation ram for precise adjustments, along with fine windage and elevation adjustment knobs. An advanced rear recoil pad protects the firearm and shooter while the front retention strap eliminates muzzle jump.



LEAD SLED® 3

PRODUCT# 820310 • UPC# 661120001430

- + IDEAL FOR MAGNUM RIFLES AND SLUGS
- + FRONT ELEVATION ADJUSTMENT
- + TRAY ACCOMMODATES UP TO 100LBS OF LEAD SHOT OR TWO 25LB. BARBELL WEIGHTS
- + NON-MARRING SKELETONIZED FRONT REST AND REAR PAD

The Lead Sled 3 has become the standard in weight reduction shooting rests. The Lead Sled 3 reduces felt recoil by up to 95% while securely holding your gun on target. The new Skeletonized front rest secures your gun with its non-marring surfaces. The improved rear buttstock cradle uses top of the line Shock Eliminator Technology and has a non-marring cradle to keep your gun in place. Rear elevation and front fingertip adjusts elevation to allow for precise adjustments.



LEAD SLED® DFT2

PRODUCT# 336677 • UPC# 661120001447

- + DUAL FRAME TECHNOLOGY (DFT) DESIGN DISPERSES MAXIMUM AMOUNT OF RECOIL ENERGY
- + TRAY ACCOMMODATES (2) STANDARD BAGS FILLED WITH 25 LBS OF LEAD SHOT OR ONE LARGE BAG
- + BENCHREST PRECISION ELEVATION AND WINDAGE ADJUSTMENTS
- + ADJUSTABLE CRADLE SYSTEM FITS ALMOST ANY LENGTH RIFLE & SHOTGUN

The Lead Sled DFT 2 (Dual Frame Technology) provides shooters with the industry's best recoil reduction system and the versatility to fit virtually any shotgun or rifle, all built around a precision shooting platform. A key feature of the DFT 2 is the ability to slide the front cradle 18" for optimal length adjustment.



LEAD SLED® SOLO™

PRODUCT# 101777 • UPC# 661120017776

- + PIVOTING ELEVATION ADJUSTMENT DESIGN WITH SINGLE KNOB CONTROL
- + ACCOMMODATES ALL RIFLES, INCLUDING DETACHABLE MAGAZINE RIFLES AND LEVER ACTION GUNS
- + TRAY ACCOMMODATES (1) STANDARD BAG FILLED WITH 25 LBS OF LEAD SHOT
- + RETENTION STRAP SECURES GUN IN FRONT REST

The Lead Sled Solo is the perfect shooting rest for sighting in any rifle or shotgun. Its unique offset frame is designed to accommodate all rifles including those with detachable magazines like the popular AR-15 platform. The heavy-duty steel construction provides a stable and solid shooting platform. A smooth pivoting elevation system is controlled with a single knob making adjusting onto target fast and precise. The front support is height adjustable and has a durable rubberized coating made to not scratch or mark your firearm. A welded steel brace covered with a durable rubber boot secures the butt of the gun while protecting it from abrasions. A strap integrated into the front support can be used to easily secure your rifles forend onto the rest.



LEAD SLED[®] WEIGHT BAGS

STANDARD BAG (SINGLE)

PRODUCT# 428334 • UPC# 66112028334

STANDARD BAG (4 PACK)

PRODUCT# 533117 • UPC# 661120331179

LARGE BAG (SINGLE)

PRODUCT# 777800 • UPC# 661120778004

- + MADE FOR LEAD SLED SHOOTING RESTS
- + SMALL BAG DESIGNED TO HOLD 7 LBS OF SAND OR 25 LBS OF LEAD SHOT
- + LARGE BAG HOLDS 20 LBS OF SAND
- + DURABLE NYLON-WEBBED HANDLES

The Lead Sled Weight Bags are available in both standard and large sizes. These bags are ideal to use for your Lead Sled 3, Solo or DFT 2. Both conveniently hold lead shot, sand, or other weighted materials. The durable handles make toting your weight bags to the range quick and easy.



STANDARD BAG
Dimensions: 5 ½"W x 10"H x 3"D



LARGE BAG
Dimensions: 10"W x 16"H x 2 ½"D

LEAD SLED® FCX™

PRODUCT# 820444 • UPC# 661120204442

- + ADJUST WINDAGE AND ELEVATIONS WITH A SINGLE MOVEMENT
- + 4" COURSE ELEVATION ADJUSTMENT AT THE REST
- + OVERALL SHOOTING REST LENGTH IS ADJUSTABLE
- + CONTOURED REAR SUPPORT PROTECTS GUNSTOCK'S FINISH

The Lead Sled FCX combines the two most innovative gun rest technologies in the industry's most advanced shooting platform. Designed for fast, precise crosshair alignment and smooth function while reducing felt recoil up to 95%. Included is the custom-fit weight bag with carry handle for easy weight transport. The Lead Sled FCX gives you ultimate accuracy and comfort all in one.



FIRE CONTROL® FRONT REST

PRODUCT# 746884 • UPC# 661120468844

- + STAINLESS STEEL LEVELING FEET
- + ELEVATION KNOB SECURELY LOCKS INTO POSITION
- + MACHINED GEARS AND RACKS FOR SMOOTH, PRECISE MOVEMENTS
- + ONE-HAND WINDAGE AND ELEVATION ADJUSTMENTS

Fire Control is an advanced alignment system that allows you continual, one-hand adjustment of downrange crosshair alignment via a multi-directional control arm. It provides you with continuous adjustment of the front forend support by manipulating the control arm with your fingertips. Once the coarse adjustments have been made to position the rest, the control arm allows fluid movement for precise crosshair alignment without having to change shooting position to loosen or tighten rest components. The result is outstanding control of crosshair alignment in a rock-solid shooting platform which delivers better accuracy than any existing rest. This revolutionary development allows accuracy and speed that previously conventional rifle rests can't offer. The continuous precision adjustment of Fire Control allows the crosshairs to easily and quickly be manipulated as you maintain a perfectly relaxed shooting position.



FIRE CONTROL® FULL LENGTH REST

PRODUCT# 100259 • UPC# 661120002598

- + ADJUSTABLE CRADLE EAR ASSEMBLY FOR INCREASED CONTROL AND CONSISTENT CLAMPING PRESSURE
- + DURABLE STEEL TUBES CONNECT FRONT AND REAR BASES
- + ONE-HAND WINDAGE AND ELEVATION ADJUSTMENTS
- + NON-MARRING REAR PAD

Fire Control Full-length Rest combines the Fire Control Front Rest with a non-marring cradle to keep your gun in place. Fire Control is an advanced alignment system that allows you continual, one-hand adjustment of downrange crosshair alignment via a multi-directional control arm. It provides you with continuous adjustment of the front forend support by manipulating the control arm with your fingertips. The result is outstanding control of crosshair alignment in a rock-solid shooting platform which delivers better accuracy than any existing rest. The continuous precision adjustment of Fire Control allows the crosshairs to easily and quickly be manipulated as you maintain a perfectly relaxed shooting position.



ZEROMAX™ SHOOTING REST

PRODUCT# 546889 • UPC# 661120468899

- + DURABLE, NON-MARRING FRONT AND REAR SUPPORTS
- + FOREND CRADLE DESIGNED TO HOLD ALL CALDWELL FRONT REST BAGS
- + MICRO ADJUSTMENT FOR ELEVATION CORRECTION
- + GREAT SHOOTING BASE FOR RIFLES AND SHOTGUNS

The Caldwell Zero-Max Shooting Rest is a full-length metal rest that comes packed with all the features that you demand. Featuring independently adjustable locking feet for precise elevation adjustment, a padded rear cradle and filled front bag to protect your firearms' finish, the Zero-Max shooting rest offers you a rock solid platform that is quick and convenient to set up wherever your next shooting venture takes you.



7 REST SHOOTING REST

PRODUCT# 1071001 • UPC# 661120015574

- + AMBIDEXTROUS - FLIPS TO ACCOMMODATE RIGHT OR LEFT-HANDED SHOOTERS
- + OVER-MOLDED SUPPORTS
- + FOLDS COMPACT FOR TRANSPORT AND STORAGE
- + LENGTH FROM FRONT TO REAR SUPPORT: 16"-24"

The 7-Rest is a truly innovative shooting accessory that utilizes its unique design to deliver exceptional versatility and true value. The asymmetric frame provides great stability while maximizing length adjustability. By simply loosening the lock knob, the angle between the two halves of the frame can be adjusted to change the distance between the front and rear supports. Having the frame offset to the side of the gun also gives adequate clearance for extended magazines on semi-autos (AR-15), lever actions and rolling blocks. Another great benefit of the frame design is its ability to be reversible. Fully adjustable front and rear supports hold your gun securely while protecting the stock and forend. It folds quickly for easy transport and storage. All these features rolled into one rest results in a one-of-a-kind shooting base that pairs with any firearm.



PRECISION TURRET SHOOTING REST

PRODUCT# 821400 • UPC# 661120214007

- + 3 LEG TRIPOD DESIGN FOR MAXIMUM STABILITY
- + MICRO- ADJUSTABLE PISTOL GRIP REST FOR PRECISE ELEVATION ADJUSTMENTS
- + NON-MARRING FOREND CLAMP KEEPS RIFLE SECURE AND CENTERED WITH SWIVEL AND TILT FEATURES
- + FRONT LEG VERTICAL ADJUSTMENT UP TO 6"
- + BALL BEARING PANNING SYSTEM WITH A 58-DEGREE ARC USING A GUN WITH AN EXTENDED MAGAZINE

Find comfort in having full range of motion and secure gun placement with the Caldwell Precision Turret Shooting Rest. The swivel/pan and tilt knobs eliminate time wasted readjusting the shooting rest, so you can spend more time shooting. This heavy duty rest features a forend clamp and micro-adjustable pistol grip attachment that are perfect for AR platform firearms.



STINGER™ SHOOTING REST

PRODUCT# 110033 • UPC# 661120000402

- + INNOVATIVE ELEVATION SYSTEM ALLOWS FOR FAST ONE HANDED, NO WOBBLE ADJUSTMENT
- + MICRO ELEVATION ADJUSTMENTS WITH FINGERTIP CONTROL
- + UP TO 3" FRONT REST VERTICAL ADJUSTMENT
- + OVERMOLDED, NON-MARRING FRONT AND REAR CRADLES

The Stinger Shooting Rest is built with a state of the art design. Central to the design is the innovative front elevation system. It's user-friendly height adjustment knob allows for fast, one handed coarse elevation adjustment. The molded front and rear supports protect the gun's finish and provide just the right amount of firmness for rock solid shots. A heavy-duty dual metal frame and quick cam locks allow the Stinger's front rest to easily slide forward or backwards then lock in place. The Stinger Shooting Rest provides versatility and ultimate stability, delivering you maximum accuracy.



THE ROCK BR™

PRODUCT# 440907 • UPC# 661120409076

- + UP TO 11.5" VERTICAL ADJUSTMENT
- + ADJUSTABLE FRONT BAG TENSION SYSTEM
- + PRECISION FINGERTIP WINDAGE SYSTEM
- + INCLUDES UNFILLED 3-LOBE BAG AND FILLED MEDIUM VARMINT FRONT BAG
- + MACHINED DIE-CAST METAL CONSTRUCTION

The Rock BR will help you discover the true potential of your rifle and ammunition. This high quality rest is designed for the most accuracy-minded shooters around, bench rest competitors. Now everyone who wants the best from their rifle can benefit from the advanced design, precision machining, and finely engineered features of The Rock BR.



THE ROCK™

PRODUCT# 383774 • UPC# 661120399766

- + UP TO 7.25" VERTICAL ADJUSTMENT
- + WIDE 3-POINT IRON BASE FOR EXTRA STABILITY
- + FOREND CRADLE ACCEPTS ALL CALDWELL DELUXE UNIVERSAL FRONT REST BAGS
- + FILLED MEDIUM VARMINT FRONT BAG INCLUDED

The best way to determine the accuracy of your rifle and ammunition is to shoot them from a solid bench with a quality shooting rest. Featuring cast iron construction, independently adjustable feet, and an adjustable and lockable forend rest, The Rock helps you eliminate the variables that make you miss.



THE ROCK™ COMBO

PRODUCT# 383640 • UPC# 661120836407

- + COMBO INCLUDES THE ROCK SHOOTING REST AND DEADSHOT® REAR SHOOTING BAG
- + UP TO 7.25" VERTICAL ADJUSTMENT
- + WIDE 3-POINT IRON BASE FOR EXTRA STABILITY
- + FOREND CRADLE ACCEPTS ALL CALDWELL DELUXE UNIVERSAL FRONT REST BAGS
- + FILLED MEDIUM VARMINT FRONT BAG INCLUDED

The best way to determine the accuracy of your rifle and ammunition is to shoot them from a solid bench with a quality shooting rest. Featuring cast iron construction, independently adjustable feet, and an adjustable and lockable forend rest, The Rock helps you eliminate the variables that make you miss.



THE ROCK JR.™

PRODUCT# 323225 • UPC# 661120232254

- + STABLE, 4 LB. CAST IRON BASE, OVERALL 5 LBS.
- + 3/4" DIAMETER STEEL POST PROVIDES SECURE AND SMOOTH ELEVATION ADJUSTMENTS UP TO 7 1/4" HEIGHT
- + COMES WITH INTERCHANGEABLE NON-SLIP RUBBER FEET OR METAL SPIKE FEET
- + FILLED MEDIUM VARMINT FRONT BAG INCLUDED WITH REST

The Rock Jr. features many of the same trademarks as The Rock Shooting Rest but in a sleeker and more compact package. When it comes to sighting-in, test firing, and informal competition, it's tough to beat The Rock Jr.



BR FOOT PADS

PRODUCT# 845221 • UPC# 661120452218

- + RUBBER-COATED METAL WASHERS BUILT TO HOLD THE ROCK BR™ SPIKED FEET
- + PROVIDES NON-SLIP BASE
- + NON-MARRING ON TABLETOP SURFACE
- + SET OF 3

BR feet pads are designed to provide a stable, non-marring solution that keep the spiked metal feet of your rest from gouging or scratching the tabletop of your shooting bench. BR feet are rubber coated, metal washers that allow the shooting rest's spiked metal feet to nest in the washer. This provides a firm, no-slip footprint while protecting your tabletop.



MATRIX™

PRODUCT# 101600 • UPC# 661120016007

- + ONE-HANDED ELEVATION ADJUSTMENT KNOB
- + UP TO 4.5" GUN LENGTH ADJUSTMENT
- + OVERMOLDED, NON-MARRING FRONT AND REAR CRADLES
- + REMOVE REAR CRADLE TO ACCOMMODATE HANDGUNS

The highly versatile Matrix combines great features and rock-solid stability in an affordable rest. Central to the design is the innovative, ultra-rigid u-channel frame which allows for quick adjustment in length to perfectly fit any firearm. A convenient storage area incorporated behind the front cradle features a removable lid that adds additional clearance for detachable magazines or bipod equipped firearms when detached, and acts as a rubberized rear support surface for firing handguns when left in place. A spring-loaded tension mechanism and height adjustment knob are great for fast, one handed elevation adjustments keeping the front cradle wobble free through the entire vertical range.

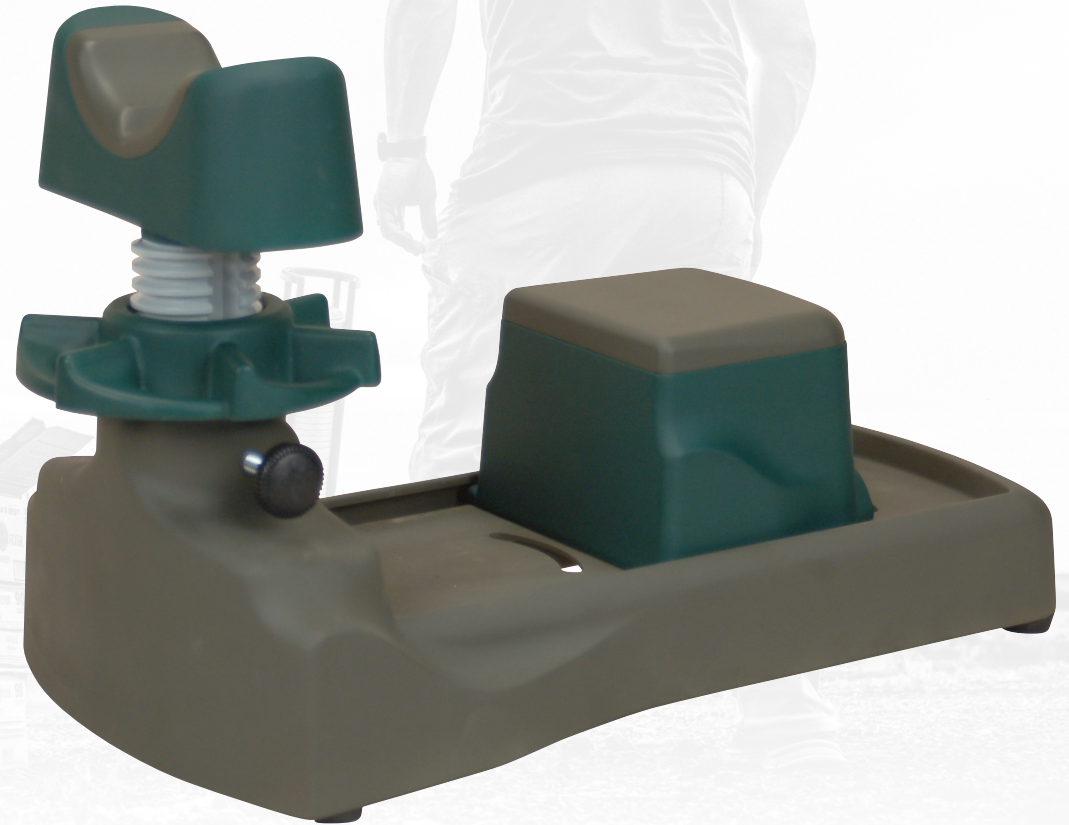


PISTOLERO™

PRODUCT# 562771 • UPC# 661120627715

- + ONE-HANDED ELEVATION ADJUSTMENT KNOB
- + UP TO 4.5" GUN LENGTH ADJUSTMENT
- + OVERMOLDED, NON-MARRING FRONT AND REAR CRADLES
- + REMOVE REAR CRADLE TO ACCOMMODATE HANDGUNS

The Pistolero is the ideal handgun shooting rest. By combining 5 inches of horizontally adjustable hand support with 3 inches of vertically adjustable barrel support, this rest accommodates virtually every size handgun. In addition, the rugged construction of this rest is virtually impervious to the elements. This combination of versatility, stability and durability make the Pistolero™ the number one value in handgun rests.



HANDY REST NXT®

PRODUCT# 574662 • UPC# 661120746621

- + 3" OF ELEVATION ADJUSTMENT AT THE CRADLE WHICH EQUATES TO 6' AT 100 YARDS
- + FRONT SLING STUD CLEARANCE GROOVE
- + CONSTRUCTED OF DURABLE LIGHTWEIGHT POLYMER WITH RUBBER OVERMOLDING
- + REMOVABLE HANDGUN SUPPORT ATTACHMENT TO CONVERT RIFLE REST INTO A HANDGUN REST
- + LOCK KNOB TO LOCK YOUR ADJUSTMENTS INTO PLACE FOR REPEATABLE ACCURACY

The Handy Rest NXT is an extremely versatile front rest. It is designed with a full six feet of elevation adjustment at 100 yards, a front sling stud clearance groove, and is constructed of durable, lightweight materials. The innovative design includes a removable handgun support attachment that easily converts this rifle rest into a handgun rest. The front rest and handgun support feature a material that will not harm firearms yet also offers a steady shooting surface.



STEADY REST NXT®

PRODUCT# 548664 • UPC# 661120486640

- + FRONT SECTION ALONE CAN BE USED AS A HANDGUN REST
- + SPANNER SECTION IS REMOVABLE TO TURN THE NXT® INTO A FRONT AND REAR REST
- + NEOPRENE PAD PROVIDES A FIRM, CUSHIONED BASE FOR YOUR FAVORITE PISTOL OR REVOLVER
- + OVERALL LENGTH OF REST IS 26"
- + 3" OF VERTICAL CRADLE ADJUSTMENT

The Steady Rest NXT gives you a steady, elevation-adjustable platform for sighting in rifles, pistols and patterning shotguns. The three-piece design allows the shooter to use the rest in one or two-piece configurations, allowing it to adjust the rest to any length long gun as well as handguns. The front and rear supports feature a non-marring material that is gentle on your firearm's finish yet is firm enough to provide a stable shooting surface.



STABLE TABLE®

PRODUCT# 252552 • UPC# 661120525523

- + HIGHLY DURABLE, WEATHERPROOF 34"X23" SYNTHETIC TABLE TOP
- + QUICK-RELEASE PIN FOR EASY SEAT HEIGHT ADJUSTMENT
- + TABLE TOP AND SEAT PIVOTING CAN BE LOCKED
- + TWO CLEANING FORKS ARE INCLUDED, ONE FOR FORE-ENDS AND ONE FOR BUTTSTOCKS

The Stable Table is purpose-built to be the finest value-priced shooting bench in the market. The tripod design is more rigid and has fewer joints than folding-style benches and is appropriate for a wide variety of shooting conditions and disciplines. A bolt in the base allows position adjustment of a single leg, leveling the tabletop. The central shaft, seat, and tabletop pivot around a center axis as a single unit while keeping the tabletop parallel to the horizon. The top is made from molded plastic with a rigid metal under-frame. The seat adjusts from 16" to 22" and rotates in tandem with the tabletop. Convenient cleaning forks are included that snap into position in the top and securely hold a gun for cleaning.



Cleaning Forks

STABLE TABLE[®] CARRY BAG

PRODUCT# 777810 • UPC# 661120778103

- + CARRIES CALDWELL STABLE TABLE CONVENIENTLY
- + FULL WRAP AROUND SHOULDER STRAPS
- + HEAVY-DUTY CONSTRUCTION WITH DOUBLE LAYER FABRIC AND PADDED LOWER PORTION
- + INNER BAG FOR THE TABLE HUB INCLUDED

This heavy-duty carrying bag will hold all pieces of your Stable Table and allows for convenient transport to the range or field. Full wrap shoulder straps, double layer fabric, heavy duty zipper and padded lower portion ensures maximum durability and protection for your Stable Table.



STABLE TABLE[®] LITE

PRODUCT# 1084745 • UPC# 661120414360

- + AMBIDEXTROUS, ROTATING SEAT, COUPLED WITH TABLE DEPTH ADJUSTMENT, FOR MAXIMUM SHOOTING COMFORT
- + FULLY COLLAPSIBLE FOR EASY TRANSPORTATION AND STORAGE
- + ALL-WEATHER TABLETOP AND SEAT
- + CAN SUPPORT UP TO 250 POUNDS OF WEIGHT
- + WEIGHS LESS THAN 30 POUNDS

Wish you could conveniently bring your own shooting table to the range? Now you can with the Stable Table Lite. This shooting table is lightweight and durable making it the perfect solution to overcrowded or rundown ranges. Setup and adjustments are fast and simple with a rotating seat and table depth adjustment to ensure maximum shooting comfort. No matter if it's raining, snowing, the shooter is right handed or left handed, this table is ready for all situations with its ambidextrous seat pivots and all-weather tabletop and seat.



BR PIVOT® PREMIUM SHOOTING BENCH

PRODUCT# 300015 • UPC# 661120000150

- + LIGHTWEIGHT ALUMINUM CENTER POST WITH PRECISION MACHINED ENDS FOR TIGHT-TOLERANCE FIT
- + TABLE TOP AND SEAT CAN SWIVEL 360°, EITHER IN UNISON OR INDEPENDENTLY
- + STURDY FEET SPREAD CONTACT OVER A WIDER AREA
- + QUICKLY AND EASILY BREAKS DOWN FOR STORAGE/TRANSPORTATION
- + FLIP THE HARDWOOD MAPLE TOP AND MOUNT IT FOR LEFT HANDED SHOOTERS

The BR Pivot is the finest shooting bench available. It combines the best materials, an unparalleled design and years of thinking, field use, and continuous development into a complete package that is ready for a lifetime of service. The BR Pivot is bombproof, foolproof and ready for users who are serious about accuracy. The padded seat can be adjusted for any height between 16" and 27". The bench breaks down into four pieces and weighs a total of 65 pounds. The weight limit of the BR Pivot is 250 pounds, which does not include the weight of the shooting rest, firearm and accessories.



TACK DRIVER® SHOOTING REST

FILLED BAG

PRODUCT# 569230 • UPC# 661120692300

UNFILLED BAG

PRODUCT# 191743 • UPC# 661120917434

- + SELF-TIGHTENING SURFACE GRIPS YOUR RIFLE AND REDUCES FELT RECOIL
- + NON-MARRING, NON-SLIP SURFACE WILL NOT HARM YOUR RIFLE'S FINISH
- + SUPPORTS ALMOST ANY RIFLE OR SHOTGUN TYPE
- + CONVENIENT CARRY HANDLE

The most user-friendly and effective, one-piece shooting bag available. This convenient shooting bag takes the place of two. You can use the Tack Driver almost anywhere, from portable and permanent shooting benches to makeshift positions in the field.



HUNTER'S BLIND BAG

PRODUCT# 247261 • UPC# 661120472612

- + IDEAL FOR DEER/TURKEY STANDS, FENCE POSTS, TREE LIMBS OR TRUCK BED SIDES
- + BAG IS TRIM, LIGHTWEIGHT, EASY-FILLING AND WILL NOT SAG OVER TIME
- + NARROW CONTOUR OF REST MATCHES MOST SPORTER WEIGHT STOCKS

Support and protect your rifle in almost any hunting situation. The Caldwell Blind Bag is the answer when other types of support are unavailable or inappropriate. Quick set-up for accurate shooting when the need for a stable rest is at a premium.



DEADSHOT[®] SHOOTING BAGS

FRONT SHOOTING BAG

PRODUCT# 516620 • UPC# 661120006572

REAR SHOOTING BAG

PRODUCT# 640721 • UPC# 661120006541

- + MADE OF DURABLE, WATER-RESISTANT 600 DENIER POLYESTER
- + FRONT SHOOTING BAG IS THE INDUSTRY'S LARGEST (APPROXIMATELY 8 LBS.)
- + QUICK-CONNECT FEATURE MAKES BAG TRANSPORT EASY

Every hunter and shooter is looking for a versatile and steady shooting system that can be set up almost anywhere, and at any time. Whether you have minutes or seconds to set up for your next shot, the DeadShot Shooting Bags are the answer. These inexpensive and functional bags continue to set the industry standard for quality and functional shooting bags.



REAR BAG



FRONT BAG

DEADSHOT® SHOOTING BAG COMBO

FILLED BAGS

PRODUCT# 939333 • UPC# 661120393337

UNFILLED BAGS

PRODUCT# 248885 • UPC# 661120488859

- + MADE OF DURABLE, WATER-RESISTANT 600 DENIER POLYESTER
- + FRONT SHOOTING BAG IS THE INDUSTRY'S LARGEST (APPROXIMATELY 8 LBS.)
- + QUICK-CONNECT FEATURE MAKES BAG TRANSPORT EASY

Every hunter and shooter is looking for a versatile and steady shooting system that can be set up almost anywhere, and at any time. Whether you have minutes or seconds to set up for your next shot, the DeadShot Shooting Bags are the answer. These inexpensive and functional bags continue to set the industry standard for quality and functional shooting bags.



SHOOTING REST FRONT BAGS

NARROW SPORTER

PRODUCT# 108325 • UPC# 661120083252

MEDIUM VARMINT

PRODUCT# 263234 • UPC# 661120632344

WIDE BENCHREST

PRODUCT# 576578 • UPC# 661120765783

- + AVAILABLE IN A VARIETY OF WIDTHS TO FIT DIFFERENT RIFLE STOCK PROFILES
- + FILLING PORT ALLOWS FOR A CUSTOMIZED FIT BY ADDING OR REMOVING MEDIA
- + CONSTRUCTED FROM NON-STRETCH POLYESTER AND HIGH-QUALITY LEATHER
- + HOOK AND LOOP TABS PROVIDES A SECURE FIT

These innovative, high-quality leather and polyester Front Shooting Bags function with most brands of front rests. The hook and loop tabs on the bags allow quick installation and removal from the cradle without time-consuming need to lace them on. The leather gives you a secure rest and the polyester, which will not stretch or sag, allows the bag to hold it's shape. This combination makes for the best shooting bag on the market.



NARROW SPORTER



MEDIUM VARMINT



WIDE BENCHREST

UNIVERSAL BENCH BAGS

ELBOW BAG

PRODUCT# 774317 • UPC# 661120743170

UNIVERSAL BAG

PRODUCT# 116375 • UPC# 661120163756

- + THE UNIVERSAL BAG CAN BE USED AS A FOREARM OR ELBOW REST OR TO RAISE THE HEIGHT OF THE REAR BAG
- + THE ELBOW BAG SAVES WEAR AND TEAR ON ELBOWS / FOREARMS.
- + CONSTRUCTED FROM NON-STRETCH POLYESTER AND HIGH-QUALITY LEATHER

What began as an improvement over the classic front rest bags has been expanded to include a variety of accessory bags for informal as well as competitive shooting. The leather gives you a secure rest and the polyester, which will not stretch or sag, allows the bag to hold it's shape. This combination makes for the best shooting bag on the market.



ELBOW BAG

Dimensions: 7"L x 7"W x 1 ¼"H



UNIVERSAL BAG

Dimensions: 5"L x 8"W x 2 ¼"H

REAR SHOOTING BAGS

- + STANDARD REAR BAG: FOR USE WITH THE 4" CENTER POST ON THE ROCK AND OTHER SIMILAR RESTS
- + MEDIUM-HIGH REAR BAG: FOR USE WITH THE FIRE CONTROL FRONT REST AND OTHER SIMILAR RESTS
- + MAGNUM EXTENDED REAR BAG BAG: FOR USE WITH EXTENDED HEIGHT SHOOTING RESTS
- + UNFILLED BAGS SHOULD BE FILLED WITH DRY SILICA SAND OR OTHER INERT FILLERS

These innovative, high-quality leather and polyester Rear Shooting Bags function with most brands of front rests. The leather gives you a secure rest and the polyester, which will not stretch or sag, allows the bag to hold its shape.



STANDARD

PRODUCT# 598458 • UPC# 661120984580

STANDARD (UNFILLED)

PRODUCT# 226645 • UPC# 661120266457



MEDIUM-HIGH

PRODUCT# 800888 • UPC# 661120008880



MAGNUM EXTENDED

PRODUCT# 445389 • UPC# 661120453895

AR DEADSHOT® TACTICAL BAG SET

PRODUCT# 934693 • UPC# 661120346937

- + PERFECT SHOOTING HEIGHT WITH PLENTY OF CLEARANCE FOR 30 ROUND MAGAZINE
- + RIFLE CAN EASILY BE ROTATED FOR FAST MAGAZINE CHANGES
- + WORKS GREAT WITH TACTICAL STYLE BOLT ACTION RIFLES AS WELL
- + EXTREMELY HEAVY-DUTY BALLISTIC NYLON RESISTS SCUFFING FROM SHARP EDGED PIC RAILS

The DeadShot Tactical Bag Set was designed to deliver an optimal, stable shooting platform for all AR-15 and AR-10 rifle platforms. The innovative dual configuration rear bag can be oriented for M4 carbine style stocks or reversed for an ideal fit with A2 style stocks. The tall profile front bag is an ideal height for AR allowing clearance for 30 round magazines. Both bags feature an extremely heavy Ballistic Nylon on the contact surfaces designed to hold up to abuse from hand guards with sharp edged pic rails. Bags are pre-filled and ready for use.



TACK DRIVER® X SHOOTING BAGS

TACK DRIVER® X

PRODUCT# 1102665 • UPC# 661120417866

TACK DRIVER® X MINI

PRODUCT# 1102666 • UPC# 661120075684

TACK DRIVER® PROP BAG

PRODUCT# 1102667 • UPC# 661120418573

- + MOST VERSATILE SHOOTING BAG ON THE MARKET MAKING THESE GREAT FOR PRS MATCHES, SIGHTING IN OR HUNTING
- + PLASTIC PELLET FILLING IS NON-ABSORBENT AND ENHANCES STABILITY WHILE SHOOTING
- + DURABLE CONSTRUCTION FOR LONG SERVICE LIFE
- + UNIQUE SHAPE ALLOWS FOR MULTIPLE REST OPTIONS

The Tack Driver X Bag provides a stable shooting position, no matter the situation. The non-absorbent plastic pellet filling can be customized for any shooter's preference by pouring out the media for a looser fill. Tack Driver X shooting bags feature a durable construction, enhancing shooting stability for the long-term. The Prop Bag can be used to support your arm or to raise the rear of the gun. Elastic straps allow for attaching the bag to your arm or rifle. A carabiner clip is included to attach the bag to your belt or sling.



X MINI



X PROP BAG



X BAG

BALLISTIC PRECISION CHRONOGRAPH G2

PRODUCT# 720002 • UPC# 661120200024

- + 18" SENSOR SPACING FOR MAXIMUM ACCURACY
- + FACTORY CALIBRATED TO WITHIN +/- 0.25% ACCURACY
- + METERS PER SECOND (MPS) OR FEET PER SECOND (FPS) READINGS
- + APP DISPLAYS VELOCITY, LOGS DATA, NOTES, WEATHER CONDITIONS AND EXPORTS VIA SMS OR EMAIL
- + MEASURES FROM 5 TO 9,999 FPS

The Ballistic Precision G2 literally flips conventional chronograph technology upside down. By inverting the system the G2 is capable of measuring in adverse light conditions making the measurements more accurate than conventional chronographs, even indoors. Collapsible and compact, the system is quick and easily deployed from its heavy duty storage case. Higher accuracy is achieved by using a high speed 48 MHz processor and by designing a circuit with an advanced data interface that allows each unit to be computer calibrated at the factory after assembly.



Tripod, Rechargeable Li-ion battery & 120/220v compatible charger Included



DOWNLOAD THE FREE APP!

See the velocity of each shot on screen and record other data identifying the load and environmental conditions. The app automatically calculates average velocity, standard deviation, minimum velocity spread and maximum velocity spread for the shot string.



BALLISTIC PRECISION SIGHT-IN TARGET CAMERA

PRODUCT# 1099107 • UPC# 661120417897

- + STREAMS LIVE 720P HD VIDEO UP TO 440 YARDS AWAY
- + INTEGRATED RECHARGEABLE LITHIUM ION BATTERIES FOR EXTENDED USE
- + FEATURES AN EXTERNAL POWER JACK FOR MORE PERMANENT INSTALLATION
- + BREAKS DOWN INTO A COMPACT STORAGE CASE FOR EASY TRANSPORT

The Ballistic Precision Sight-In Target Camera lets you spend more time shooting and less time walking. Whether you are preparing for competition season or hunting season, this easy to use setup is perfect for getting dialed in. Download the free app available in the Apple or Android stores and enjoy real time, 720p high definition video streamed directly to your device. The app also allows you to take pictures, record video and calculate group size. A rechargeable lithium ion battery lasts up to 6 hours. The fully, contained, waterproof housing for both the camera and the transmitter allow for use in all weather conditions and the included storage case makes for easy transport.



DOWNLOAD THE FREE APP!

View your shots, record video, take video stills and even record/save notes without leaving the bench. The app even has a group calculation feature that tells you the grouping size!



BALLISTIC PRECISION LONG RANGE TARGET CAMERA

PRODUCT# 156726 • UPC# 661120567264

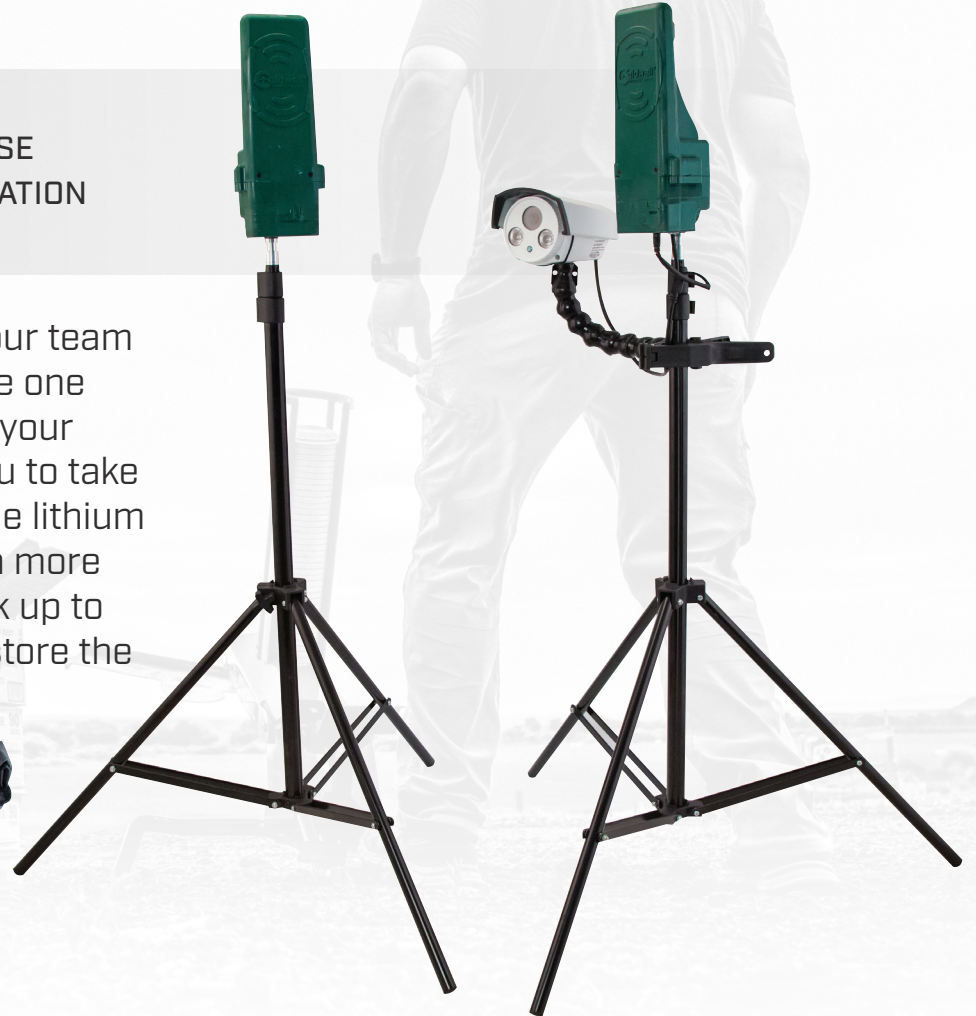
- + STREAMS LIVE 720P HD VIDEO UP TO 1 MILE AWAY
- + INTEGRATED RECHARGEABLE LITHIUM ION BATTERIES FOR EXTENDED USE
- + FEATURES AN EXTERNAL POWER JACK FOR MORE PERMANENT INSTALLATION
- + BREAKS DOWN INTO A COMPACT STORAGE CASE FOR EASY TRANSPORT

The Ballistic Precision Long Range Target Camera was designed by our team of engineers to be the best target camera system available today. The one mile range delivers live streaming HD video footage of your target to your smart phone or tablet through Caldwell's free app. The app allows you to take pictures, record video and calculate your group size. The rechargeable lithium ion battery allows you to use the Target Camera for up to 6 hours. If a more permanent setup is desired it features an external power jack to hook up to an alternative power source. A premium storage case is included to store the entire system.



DOWNLOAD THE FREE APP!

View your shots, record video, take video stills and even record/save notes without leaving the bench. The app even has a group calculation feature that tells you the grouping size!



ACCUMAX® PREMIUM CARBON FIBER SWIVEL STUD BIPODS

6"-9" BIPOD

PRODUCT# 1092515 • UPC# 661120416166

9"-13" BIPOD

PRODUCT# 1092516 • UPC# 661120416272

13"-30" BIPOD

PRODUCT# 1095201 • UPC# 661120417750

- + CARBON FIBER LEGS ARE SUPER STRONG AND LIGHTWEIGHT, WITH NON-SLIP RUBBER FEET
- + TWIST-LOCKS FOR FAST INCREMENTAL LEG LENGTH ADJUSTMENT
- + LEGS LOCKOUT FORWARD, 90 DEGREE, OR BACKWARD WITH SPRING-LOADED BUTTONS
- + SECURE LEGS STOPS PREVENT LEGS FROM OVEREXTENDING

Achieve maximum accuracy with the Caldwell Accumax Carbon Fiber Bipod. The Accumax Premium Carbon Fiber Bipod attaches for easy and secure lock-up. The Premium Carbon Fiber Bipod also features an omni-directional ball mount for 360 degree panning, a lever lock handle for fast adjustments, and of course, twist-lock leg length adjustments.



ACCUMAX[®] PREMIUM CARBON FIBER M-LOK[®] / KEYMOD BIPODS

6"-9" BIPOD

PRODUCT# 1081953 • UPC# 661120413059

9"-13" BIPOD

PRODUCT# 1082223 • UPC# 661120413073

13"-30" BIPOD

PRODUCT# 1095203 • UPC# 661120417736

- + M-LOK AND KEYMOD ADAPTER FOR EASY AND SECURE LOCK-UP
- + QUICK-DEPLOYMENT CARBON FIBER LEGS WITH VERTICAL TWIST-LOCK TECHNOLOGY
- + LEG ANGLE ADJUSTMENT UP TO 180 DEGREES WITH STAINLESS STEEL PUSH-BUTTON LEG LOCK
- + SOFT RUBBER FEET FOR ENHANCED STABILITY

Achieve maximum accuracy with the Caldwell Accumax Carbon Fiber Bipod. The Accumax Premium Carbon Fiber Bipod attaches for easy and secure lock-up. It features quick-deployment carbon fiber legs with 90 degree forward locking method or backward method with spring-loaded buttons. The Premium Carbon Fiber Bipod also features an omni-directional ball mount for 360 degree panning, a lever lock handle for fast adjustments, and of course, twist-lock leg length adjustments.



M-LOK

KEYMOD

ACCUMAX® PREMIUM CARBON FIBER PICATINNY RAIL BIPODS

6"-9" BIPOD

PRODUCT# 1081952 • UPC# 661120413042

9"-13" BIPOD

PRODUCT# 1082222 • UPC# 661120413066

13"-30" BIPOD

PRODUCT# 1095202 • UPC# 661120417743

- + PICATINNY RAIL ATTACHMENT FOR EASY AND SECURE LOCK-UP
- + QUICK-DEPLOYMENT CARBON FIBER LEGS WITH VERTICAL TWIST-LOCK TECHNOLOGY
- + LEG ANGLE ADJUSTMENT UP TO 180 DEGREES WITH STAINLESS STEEL PUSH-BUTTON LEG LOCK
- + SOFT RUBBER FEET FOR ENHANCED STABILITY

Achieve maximum accuracy with the Caldwell Accumax Carbon Fiber Bipod. The Accumax Premium Carbon Fiber Bipod attaches for easy and secure lock-up. It features quick-deployment carbon fiber legs with 90 degree forward locking method or backward method with spring-loaded buttons. The Premium Carbon Fiber Bipod also features an omni-directional ball mount for 360 degree panning, a lever lock handle for fast adjustments, and of course, twist-lock leg length adjustments.



XLA[®] M-LOK[®] / KEYMOD BIPODS

6"-9" BIPOD

PRODUCT# 1081950 • UPC# 661120413028

9"-13" BIPOD

PRODUCT# 1081951 • UPC# 661120413035

- + LOWEST PROFILE BIPOD MOUNT AVAILABLE
- + M-LOK[®] AND KEYMOD ADAPTER FOR USE ON POLYMER HAND GUARDS
- + LIGHTWEIGHT AND STURDY ALUMINUM CONSTRUCTION
- + LEGS ARE NOTCHED FOR EASY INDEXING TO A SPECIFIC HEIGHT
- + TWIST-LOCK TECHNOLOGY FOR LOCKING LEGS BETWEEN NOTCHES

As the lowest profile bipod mount available, the Caldwell M-LOK/Keymod XLA Bipod is lightweight, sturdy and ready for all situations. Shoot with confidence while utilizing the heavy duty aluminum construction, quick-deployment legs and soft rubber feet for enhanced stability. This tactical rifle bipod features everything needed to securely fit your rifle and create the ideal shooting experience.



M-LOK[®] ADAPTER



KEYMOD ADAPTER



XLA[®] PICTATINNY RAIL BIPODS

6"-9" BIPOD

PRODUCT# 110140 • UPC# 661120001553

9"-13" BIPOD

PRODUCT# 110141 • UPC# 661120001560

- + LIGHTWEIGHT ADJUSTABLE ALUMINUM DESIGN
- + ADJUSTABLE LEG HEIGHT FOR THE PERFECT POSITIONING
- + SOFT RUBBER FEET FOR ENHANCED STABILITY
- + COLLAPSIBLE FOR TRANSPORT OR TO LEAVE ON YOUR GUN
- + SPRING LOADED LEGS WITH LOCK OUT KNOBS

The Caldwell Pic Rail XLA Fixed Bipods provide a stable shooting platform that conveniently attaches to any Pic Rail. The Pic Rail XLA Fixed Bipods feature a light weight aluminum design, quick deployment with spring loaded legs, adjustable leg height for perfect positioning and soft rubber feet for enhanced stability. The cam over lever secures the bipod to the pic rail firmly, and is collapsible for leaving on your firearm for easy transport.



XLA® SWIVEL STUD PIVOT BIPODS

6"-9" (BLACK)

PRODUCT# 247142 • UPC# 661120471424

9"-13" (BLACK)

PRODUCT# 571429 • UPC# 661120714293

9"-13" (CAMO)

PRODUCT# 445033 • UPC# 661120450337

13"-23" (BLACK)

PRODUCT# 701417 • UPC# 661120014171

13.5"-27" (BLACK)

PRODUCT# 635705 • UPC# 661120357056

13.5"-27" (CAMO)

PRODUCT# 445088 • UPC# 661120450887

- + 18 DEGREE DIRECTIONAL CANT LEFT OR RIGHT
- + LEGS INSTANTLY SPRING-OUT WITH THE TOUCH OF A BUTTON
- + LEGS COLLAPSE FORWARD FOR TRANSPORT
- + NON-SLIP RUBBER FEET FOR ENHANCED STABILITY
- + PADDED BASE PROTECTS FIREARM FOREND

The Caldwell® XLA Bipods provide a stable shooting support that conveniently attaches to almost any firearm with a sling swivel stud. The lightweight aluminum design adds minimal weight and deploys quickly, with legs that instantly spring out to the shooting position with the touch of a button. The legs are notched for easy indexing to a specific height. There is a connection point for sling attachment and multi section legs that collapse forward allowing for convenient carry of the firearm. Durable rubber feet provide enhanced stability, while the padded bipod base protects the firearm's forend.



XLA[®] SWIVEL STUD FIXED BIPODS

6"-9" (BLACK)

PRODUCT# 379852 • UPC# 661120798521

9"-13" (BLACK)

PRODUCT# 403215 • UPC# 661120032151

13"-23" (BLACK)

PRODUCT# 591336 • UPC# 661120913368

- + LEGS INSTANTLY SPRING-OUT WITH THE TOUCH OF A BUTTON
- + LEGS COLLAPSE FORWARD FOR TRANSPORT
- + NON-SLIP RUBBER FEET FOR ENHANCED STABILITY
- + PADDED BASE PROTECTS FIREARM FOREND

The Caldwell XLA Bipods provide a stable shooting support that conveniently attaches to almost any firearm with a sling swivel stud. The lightweight aluminum design adds minimal weight and deploys quickly, with legs that instantly spring out to the shooting position with the touch of a button. The legs are notched for easy indexing to a specific height. There is a connection point for sling attachment and multi section legs that collapse forward allowing for convenient carry of the firearm. Durable rubber feet provide enhanced stability, while the padded bipod base protects the firearm's forend.



PIC RAIL ADAPTER PLATE

PRODUCT# 156716 • UPC# 661120567165

- + ABILITY TO ALIGN THE ADAPTER WITH THE BARREL INSTEAD OF THE STOCK
- + SIMULTANEOUSLY UTILIZES SHOULDER SLING AND A PIC RAIL MOUNTED ACCESSORY
- + ADJUSTABLE TENSION AND VERTICAL ANGLE

The Caldwell Pic Rail Adapter is perfect for utilizing both your shoulder sling and a pic rail mounted accessory at the same time. By adjusting the tension on the front and rear T20 screws you can change the vertical angle of the Pic Rail Adapter to align with the barrel instead of the stock. A curved “fore-end style” profile ensures a perfect mating surface for the bipod.



BIPOD PIVOT LOCK

PRODUCT# 535881 • UPC# 661120358817

- + SPRING LOADED "PULL" OUT FOR EASY HANDLE POSITIONING
- + SECOND ADAPTER FOR SAE #10-32 THREADED EXTERNAL SPRING BIPODS
- + "C" IDENTIFIES THE CALDWELL® ADAPTER FROM THE SAE ADAPTER
- + EASILY ADJUST PIVOT TENSION WHILE STILL SHOULDERING YOUR RIFLE

The Caldwell Bipod Pivot Lock works on all XLA Bipod Pivot models. It also fits most other brand bipods and includes a #10-32 threaded adapter for SAE threaded pivot model bipods. Easily adjust the tension of your pivot mount without tools!



BIPOD ADAPTER FOR PICATINNY RAIL

PRODUCT# 535423 • UPC# 661120354239

- + ATTACH ANY TRADITIONAL BIPOD OR SLING TO A PICATINNY RAIL
- + LIGHT-WEIGHT, DURABLE MACHINED ALUMINUM CONSTRUCTION
- + TWO INTEGRATED FASTENERS ENSURE A SECURE ATTACHMENT

The Bipod Adapter quickly and easily attaches to a picatinny rail. Any standard bipod and sling can be attached to the integrated swivel stud. A curved “fore-end style” profile assures the perfect fit for the bipod to mate with.



AR BIPODS

7.5"-10" PRONE (BLACK)

PRODUCT# 531123 • UPC# 661120311232

7.5"-10" PRONE (TAN)

PRODUCT# 534455 • UPC# 661120344551

14.5"-30" SITTING (BLACK)

PRODUCT# 532255 • UPC# 661120322559

- + QUICKLY ATTACHES/DETACHES TO ANY PICATINNY RAIL
- + LIGHTWEIGHT AND DURABLE ANODIZED ALUMINUM CONSTRUCTION
- + AVAILABLE IN MATTE BLACK FINISH OR DESERT TAN
- + UP TO 18° DIRECTIONAL CANT LEFT OR RIGHT
- + UP TO 20° PAN LEFT OR RIGHT

The AR Bipods combine a quick attach system for securing to any picatinny rail with all the other outstanding features you have come to expect from Caldwell®. Built in systems for both pivot and cant movements give the shooter maximum range of alignment without having to reposition the bipod. The unique internal spring system is both low profile and quiet. The unique leg adjustment mechanism delivers fast and secure, no-wobble height positioning. Rubber feet ensure good grip on all surfaces. Lightweight and durable anodized aluminum construction. Choose from sitting or prone models.



SHOOTING BIPODS

8.75"-12" PRONE

PRODUCT# 457855 • UPC# 661120397229

14"-30" SITTING

PRODUCT# 335235 • UPC# 661120352358

- + EASILY ATTACHABLE AND DETACHABLE FROM THE FRONT SWIVEL STUD
- + LIGHTWEIGHT ALUMINUM DESIGN FOR QUIET, WEATHERPROOF PERFORMANCE
- + BUILT-IN SWIVEL PAN FEATURE LEFT OR RIGHT 20 DEGREES COMBINED WITH AN 18 DEGREE BI-DIRECTIONAL CANT
- + STUD FOR SLING ATTACHMENT

Designed with all of the features necessary for steady, accurate shooting, regardless of the range or terrain. Now you have extreme motion ranging capability with our exclusive wide-pan and stock canting features that come standard with our bipod design. Two-models available for adapting to any shooting situation. Folds out-of-the-way when not in use.



MAG SHIELD

PRODUCT# 300010 • UPC# 054118000452

- + AMBIDEXTROUS
- + 1/2" THICK ENERGY-ABSORBING PAD
- + APPROXIMATELY 20 CUBIC INCHES OF COVERAGE
- + SOFT LEATHER PROVIDES AMPLE FRICTION TO KEEP GUN LOCKED INTO THE SHIELD AND YOUR SHOULDER

The Magnum Recoil Shield is designed to provide unparalleled recoil protection while sighting in your rifle, bench rest shooting, or participating in many other shooting activities. The size and shape of the Magnum Recoil Shield creates the perfect combination of function and comfort. It can be worn on the left or right shoulder and attaches with an easily adjustable side closure for a secure fit. The leather on the front secures the gun in place, while the leather on the back of the shield provides a comfortable feel and prevents the shield from sliding around on your shoulder.



MAG SHIELD PLUS

PRODUCT# 310010 • UPC# 054118002500

- + AMBIDEXTROUS
- + 1/2" THICK ENERGY-ABSORBING PAD
- + APPROXIMATELY 32 CUBIC INCHES OF COVERAGE
- + SOFT LEATHER PROVIDES AMPLE FRICTION TO KEEP GUN LOCKED INTO THE SHIELD AND YOUR SHOULDER

The Mag Plus Shield is designed to provide the same unparalleled recoil protection as the original Mag Shield but features a larger surface area. The heart shaped design expands the recoil absorption area, extending protection to the upper arm. This quality is especially valuable in those cases when the rifle or shotgun is not shouldered perfectly. The size and shape of the Mag Plus Shield creates the perfect combination of function and comfort. This time-tested design has become a favorite for shooters around the world.



SUPER MAG SHIELD PLUS

PRODUCT# 330110 • UPC# 054118001558

- + AMBIDEXTROUS
- + 1" THICK ENERGY-ABSORBING PAD
- + APPROXIMATELY 40 CUBIC INCHES OF COVERAGE
- + SOFT LEATHER PROVIDES AMPLE FRICTION TO KEEP GUN LOCKED INTO THE SHIELD AND YOUR SHOULDER

The Super Mag Plus Shield is designed to provide the highest protection level of any of our shields. With maximum amount of absorbing protection, shooting even the biggest calibers like the 416 Rigby and the 500 Nitro Express. The comfortable leather cover conforms to the body while the energy-absorbing foam insert dramatically reduces felt recoil.



FIELD SHIELD

PRODUCT# 350010 • UPC# 054118000537

- + AMBIDEXTROUS
- + 1/4" THICK ENERGY-ABSORBING PAD
- + APPROXIMATELY 37 CUBIC INCHES OF COVERAGE
- + SOFT LEATHER PROVIDES AMPLE FRICTION TO KEEP GUN LOCKED INTO THE SHIELD AND YOUR SHOULDER

Created with the field shooter in mind, the lightweight, foam recoil system is designed for quick and easy gun mounting in the field and provides valuable protection from recoil. It is ambidextrous and attaches with an easily adjustable hook and loop closure for a secure fit. Front and back leather faces secure the gun comfortably in place, eliminating any sliding. The shield's 1/4" thick energy-absorbing pad provides excellent protection from all shotguns.



HIDDEN COMFORT RECOIL SHIELD

PRODUCT# 360000 • UPC# 054118003620

- + AMBIDEXTROUS
- + 1/4" THICK ENERGY-ABSORBING PAD
- + APPROXIMATELY 30 CUBIC INCHES OF COVERAGE
- + COMFORTABLE COTTON-BLEND COVER EASILY ATTACHES TO BRA STRAP WITH HOOK AND LOOP CLOSURES

Created with the field shooter in mind, the lightweight, foam recoil system is designed for quick and easy gun mounting in the field and provides valuable protection from recoil. It is ambidextrous and attaches with an easily adjustable hook and loop closure for a secure fit. Front and back leather faces secure the gun comfortably in place, eliminating any sliding. The shield's 1/4" thick energy-absorbing pad provides excellent protection from all shotguns.



E-MAX[®] SHADOWS PRO

PRODUCT# 1136234 • UPC# 661120259961

- + LAB CERTIFIED 25DB NRR HEARING PROTECTION
- + BLUETOOTH[®] CONNECTIVITY FOR STREAMING MUSIC & TAKING CALLS
- + CHARGE LEVEL INDICATORS FOR MONITORING BATTERY LIFE FOR CASE & EAR BUDS
- + MULTIPLE SIZE TIPS FOR COMFORTABLE FIT & PERFECT SEAL

The E-MAX Shadows Pro are your favorite E-MAX Shadows with some new bells and whistles. The E-MAX Shadows Pro connect via Bluetooth to your device for up to 6 hours of music or phone calls. The redesigned pro version of the Shadows feature push button controls to make it easy to adjust ambient noise, change volume, answer phone calls, and control your voice assistant app like Siri. This product contains an optional magnetic lanyard and a rechargeable storage case that has an LED Battery Level Indicator for each ear bud so you know when your E-MAX Shadows Pro are fully charged and ready for the range. Like the E-MAX Shadows, these come with multiple size earplug options for a custom fit for anyone. The custom sized foam tips achieve a rating of 25dB NRR.



The Bluetooth[®] word mark and logos are registered trademarks owned by Bluetooth SIG, Inc. and any use of such marks by Battenfeld Technologies Inc.[®] is under license. Other trademarks and trade names are those of their respective owners.

patents: aob.com/patents

E-MAX[®] SHADOWS

BLACK

PRODUCT# 1102673 • UPC# 661120075691

FLAT DARK EARTH

PRODUCT# 1134903 • UPC# 661120103608

- + BLUETOOTH[®] CONNECTIVITY FOR STREAMING MUSIC & TAKING CALLS
- + LAB CERTIFIED 23DB NRR HEARING PROTECTION
- + DUAL MICROPHONES FOR DIRECTIONAL CLARITY
- + MULTIPLE SIZE TIPS FOR CUSTOM FIT
- + RECHARGEABLE STORAGE CASE

The E-Max Shadows are Bluetooth, rechargeable electronic ear plugs designed to go where you go, play all your music, and keep your ears protected. High quality stereo sound is Bluetooth compatible with your mobile device and comes with a 23dB noise reduction rating. Dual microphones provide directional clarity and come equipped with easy to use touch volume controls. The charging case comes with an integrated lithium battery.



The Bluetooth[®] word mark and logos are registered trademarks owned by Bluetooth SIG, Inc. and any use of such marks by AOB Products Company is under license. Other trademarks and trade names are those of their respective owners.



E-MAX® POWER CORDS

PRODUCT# 1121933 • UPC# 661120081432

- + BLUETOOTH® CONNECTIVITY FOR STREAMING MUSIC & TAKING CALLS
- + LAB CERTIFIED 22DB NRR HEARING PROTECTION
- + 6 HOUR RUN TIME
- + MULTIPLE SIZE TIPS FOR CUSTOM FIT

The E-Max Power Cords are Bluetooth ear plugs that allow you to listen to your favorite music on your mobile device all while protecting your hearing on the range. Complete with high-quality stereo sound and a corded design that keeps them together, these plugs are rated with a 22dB noise reduction rating.



The Bluetooth® word mark and logos are registered trademarks owned by Bluetooth SIG, Inc. and any use of such marks by AOB Products Company is under license. Other trademarks and trade names are those of their respective owners.

E-MAX[®] PRO

- + LAB CERTIFIED 23DB NRR HEARING PROTECTION
- + LOW-PROFILE DESIGN FOR UNINTERRUPTED CHEEK WELD - COMPACT FOLDING DESIGN
- + EASY TO USE PUSH BUTTON VOLUME CONTROLS
- + AUTO-SHUTOFF (4 HOURS WITHOUT TOUCHING CONTROLS)
- + RUNS ON 3 AAA BATTERIES (INCLUDED) OR CALDWELL'S LITHIUM-ION BATTERY PACK (SOLD SEPARATELY)

YOUTH SIZES



GRAY

PRODUCT# 1099602
UPC# 661120417910



FDE

PRODUCT# 1099603
UPC# 661120417903



AQUA

PRODUCT# 1101672
UPC# 661120075745



NEON BLUE

PRODUCT# 1103307
UPC# 661120418702



HOT CORAL

PRODUCT# 1108763
UPC# 661120079293



NEON GREEN

PRODUCT# 1103306
UPC# 661120418696

E-MAX® PRO BT LITHIUM

PRODUCT# 1181236 • UPC# 661120999553

- + LAB CERTIFIED 24dB NRR HEARING PROTECTION
- + BLUETOOTH® CONNECTIVITY FOR STREAMING MUSIC
- + LOW PROFILE EAR CUPS FOR RIFLE & SHOTGUN STOCK CLEARANCE
- + DUAL MICROPHONES FOR 360° DIRECTIONAL CLARITY

The E-MAX Pro BT Lithium features high quality Bluetooth hearing protection with an all-day comfortable fit all at an affordable price. These E-MAX are Bluetooth compatible with mobile devices and have a 24dB NRR. With high quality stereo sound and easy to use push button volume controls, you can listen to all your favorite music while on the range. Runs on an included rechargeable lithium-ion battery.



The Bluetooth® word mark and logos are registered trademarks owned by Bluetooth SIG, Inc. and any use of such marks by AOB Products Company is under license. Other trademarks and trade names are those of their respective owners.

E-MAX[®] LITHIUM-ION BATTERY

PRODUCT# 1181238 • UPC# 661120264972

- + COMPATIBLE WITH E-MAX PRO & E-MAX PRO BT EARMUFFS
- + ESTIMATED 16 HOURS RUNTIME FOR EXTENDED USE

The E-MAX Lithium-Ion Battery is compatible with Caldwell E-MAX Pro hearing protection. Simply charge the battery pack with a micro USB cable and the LED charge indicator will show when the battery is fully charged. With a 16 hour runtime, this rechargeable battery pack securely fits in your electronic hearing protection to keep your E-MAX Pros running for a day at the range.



PASSIVE HEARING PROTECTION

- + LOW-PROFILE DESIGN FOR UNINTERRUPTED CHEEK WELD
- + 24DB NOISE REDUCTION RATING
- + COMFORT PADDED HEADBAND - SOFT COMFORTABLE EAR CUSHIONS
- + COMPACT FOLDING DESIGN

YOUTH SIZES



GRAY

PRODUCT# 1103305
UPC# 661120418689



NEON BLUE

PRODUCT# 1103308
UPC# 661120418719



HOT CORAL

PRODUCT# 1108764
UPC# 661120079309



NEON GREEN

PRODUCT# 1103309
UPC# 661120418726

E-MAX[®] LOW PROFILE

GREEN

PRODUCT# 487557 • UPC# 661120875574

PINK

PRODUCT# 487111 • UPC# 661120871118

MOSSY OAK BREAK-UP

PRODUCT# 487200 • UPC# 661120872009

- + 23DB NOISE REDUCTION RATING
- + ADJUSTABLE VOLUME CONTROL
- + 3.5MM AUDIO INPUT JACK
- + DUAL MICROPHONES INSTANTLY SHUT OFF TO PROTECT THE SHOOTER'S HEARING

The Low-Profile E-Max[®] hearing protection combines great circuitry with a low profile earcup that's ideal for shotgun shooters and action shooters. The E-Max[®] amplifies sounds below 85 decibels, which amplifies normal communication, range commands, and environmental sounds. Two microphones – one in each cup – give the user true stereo sound and allow the user to identify the directional source of a sound. Runs on 2 AAA batteries (not included).



E-MAX[®]

PRODUCT# 497700 • UPC# 661120977001

- + 25DB NOISE REDUCTION RATING
- + DUAL MICROPHONES INSTANTLY SHUT OFF TO PROTECT THE SHOOTER'S HEARING
- + PADDED HEADBAND FOR MAXIMUM COMFORT
- + TRUE STEREO AMPLIFICATION DELIVERS MAXIMUM VOLUME AND CLARITY

The Caldwell E-Max hearing protection combines great circuitry with a standard earcup for better protection. The two microphones in the E-Max amplify sounds below 85 decibels, which amplifies normal communication, range commands, and environmental sounds. Above 85 decibels, the microphones shut off to protect the shooter's hearing. Ear cup width is 1.75 inches and two AAA batteries are required (not included). Enabled with one stereo microphone in each cup, the user can localize sound from all directions. 25dB Noise Reduction Rating.



E-MAX[®] BTH

PRODUCT# 487605 • UPC# 661120876052

- + 21DB NOISE REDUCTION RATING
- + ADJUSTABLE VOLUME CONTROL
- + DUAL MICROPHONES INSTANTLY SHUT OFF TO PROTECT THE SHOOTER'S HEARING
- + TRUE STEREO AMPLIFICATION DELIVERS MAXIMUM VOLUME AND CLARITY

The E-Max[®] Behind-the-Head hearing protection combines great circuitry with a low profile ear cup that's ideal for shotgun shooters and action shooters. The E-Max[®] amplify sounds up to 20dB, controlled by the volume dial on the right ear cup. This is beneficial for normal communication, range commands, and environmental sounds. With sounds above 85 decibels, the speakers shut off for a split second to protect the shooters hearing. Two microphones, one in each cup, give the user true stereo function and help the user to localize sound. 21dB Noise Reduction Rating.



RANGE PLUGS (10-PACK)

PRODUCT# 568231 • UPC# 661120682318

- + 31DB NRR
- + TAPERED DESIGN MAKES THE PLUGS EASY TO INSERT
- + POLYURETHANE FOAM MAKES THE PLUGS COMFORTABLE TO WEAR
- + CORD AND CLIP MAKE IT EXTREMELY EASY TO KEEP TRACK OF

Never lose your earplugs again with Caldwell Range Plugs featuring integrated cord and clip. Caldwell designed these Range Plugs to have tapered shape, made of polyurethane foam to make them easy to insert and comfortable for hours of use. The cord can be used in conjunction with the provided clip to snap on the back of your hat or the collar of your shirt so you always know where your ear plugs are. 31dB Noise Reduction Rating.



PRO RANGE SHOOTING GLASSES

PRODUCT# 320040 • UPC# 661120200406

- + ADJUSTABLE NOSE PIECE AND TEMPLES
- + BLOCKS 99.9% OF HARMFUL UV RAYS
- + IMPACT RESISTANT

The Caldwell Pro Range Glasses feature a stylish wrap-around design and are a great choice for all shooters. They feature an adjustable nose piece and temples for all day comfort. The scratch resistant lens meets ANSI Z87.1 standards and offers 99.9% UV protection.



E-MAX® LOW PROFILE MUFFS & SHOOTING GLASSES COMBO

PRODUCT# 487309 • UPC# 661120873099

- + 25DB NOISE REDUCTION RATING
- + DUAL MICROPHONES INSTANTLY SHUT OFF TO PROTECT THE SHOOTER'S HEARING
- + PADDED HEADBAND FOR MAXIMUM COMFORT
- + TRUE STEREO AMPLIFICATION DELIVERS MAXIMUM VOLUME AND CLARITY

The Caldwell E-Max hearing protection combines great circuitry with a standard earcup for better protection. The two microphones in the E-Max amplify sounds below 85 decibels, which amplifies normal communication, range commands, and environmental sounds. Above 85 decibels, the microphones shut off to protect the shooter's hearing. Ear cup width is 1.75 inches and two AAA batteries are required (not included). Enabled with one stereo microphone in each cup, the user can localize sound from all directions. 25dB Noise Reduction Rating.

The Caldwell Pro Range Glasses feature a stylish wrap-around design and are a great choice for all shooters. They feature an adjustable nose piece and temples for all day comfort. The scratch resistant lens meets ANSI Z87.1 standards and offers 99.9% UV protection.



EYES & EARS BELT CLIP

PRODUCT# 417600 • UPC# 661120176008

- + CONVENIENTLY HOLDS YOUR HEARING PROTECTION, SAFETY GLASSES & KEYS
- + FITS UP TO A 2 1/4" WIDE BELT
- + MATERIAL BENDS BUT WON'T BREAK

The Caldwell Eyes and Ears Belt Clip offers shooters a secure, convenient location to store both eye and ear protection when not in use. Ideal for at the range or in the field, the Eyes and Ears Belt Clip puts an end to the old question of where did those glasses or ear muffs go? Constructed of durable, flexible polymer, the Eyes and Ears Belt Clip will survive years of use. Accepts belts up 2 1/4 inches wide, and hearing protection with bands up to 2 inches wide.



ULTIMATE SHOOTING GLOVES

SMALL/MEDIUM

PRODUCT# 1071004 • UPC# 661120512936

LARGE/X-LARGE

PRODUCT# 1071005 • UPC# 661120512943

- + CUSTOMIZED PADDING LAYOUT ALLOWS FULL RANGE OF MOVEMENT
- + ELASTIC BACKING AND FINGERS PROVIDES A CUSTOM GRIP FOR EXTREME DEXTERITY
- + LEATHER REINFORCEMENT PATCH PROTECTS AGAINST "SLIDE BITE"
- + RUBBERIZED PALM PROVIDES EXTREME GRIP

Caldwell's Ultimate Shooting Gloves are the ideal accessory for your range bag. These lightweight gloves are built to protect your hands from the elements. Their breathable material prevents your hands from overheating while a section is reinforced with leather to avoid slide bite. The elastic backing provides a custom grip for extreme dexterity to you can easily load magazines.



TAC OPS® BELLY BAND HOLSTER

SMALL / MEDIUM

PRODUCT# 1201980 • UPC# 661120749387

LARGE

PRODUCT# 1082698 • UPC# 661120412540

X-LARGE

PRODUCT# 1092405 • UPC# 661120415503

- + HIGH QUALITY, MOISTURE-WICKING MATERIAL FOR MAXIMUM BREATHABILITY
- + TWO ELASTIC POCKETS THAT CAN BE USED TO APPENDIX CARRY WITH LEFT OR RIGHT HAND DRAW
- + SLIDE PROTECTION TAB KEEPS FIREARMS AWAY FROM THE SKIN
- + ELASTIC POCKETS CAN DOUBLE AS A CELL PHONE HOLDER, MAGAZINE HOLDER OR FLASHLIGHT HOLDER

Carry comfortably with the Caldwell Tac Ops Belly Band Holster. With high quality, moisture-wicking material this holster is perfect for every day carry, even in warmer weather. The slide protection tab keeps firearms away from the skin to prevent pinching or rubbing while in use. This tactical handgun holster is also machine washable making cleaning a breeze. Standard size fits waists up to 40". X-Large size fits waists up to 52".



UNIVERSAL BRASS CATCHER S.A.

PRODUCT# 110038 • UPC# 661120000457

- + SWING-OPEN DESIGN ALLOWS FOR CONVENIENT CHAMBER ACCESS
- + UNIVERSAL DOUBLE HOOK & LOOP ATTACHMENT FOR USE ON BOLT-ACTION AND SEMI-AUTOMATIC RIFLES
- + INTERNAL CAGE DESIGN MAINTAINS BAG SHAPE
- + 100 ROUND CAPACITY [.223] WITH A ZIPPERED BOTTOM FOR EASY BRASS REMOVAL

The Caldwell Universal Brass Catcher is the perfect tool for any re-loader or conscious shooter. This expended brass catcher conveniently fits onto bolt-action and semi-automatic rifles to allow you to focus on shooting, rather than worrying about where your brass is landing. When the bag is full (100 rounds of .223) simply use the zipper on the bottom of the bag to empty the casings into your desired container and keep shooting.



BRASS TRAP

PRODUCT# 122560 • UPC# 661120225607

- + USE ON BENCHTOP OR ATTACH TO ANY TRIPOD WITH A 1/4-20 MALE THREADED STUD (TRIPOD NOT INCLUDED)
- + FOLDS UP EASILY FOR COMPACT STORAGE
- + HEAT RESISTANT MESH RESISTS MELTING
- + INCLUDED STORAGE BAG

Are you tired of spending as much time sifting through grass looking for brass as you do shooting at the range? Look no more with the Caldwell Brass Trap. It is specifically designed to catch the brass in most shooting environments with any gun. The Brass Trap quickly assembles to be set on a bench and catch all of your rifle brass or it can be mounted on tripod to catch all of your pistol brass. When you are done shooting simply unzip the zipper for quick brass removal and break it down to store in your range bag. Spend more time shooting and less time looking for brass with the Caldwell Brass Trap.



Storage Bag Included



PIC RAIL BRASS CATCHER

PRODUCT# 530143 • UPC# 661120301431

- + MOUNTS TO ANY AR-15 RIFLE WITH A FLAT TOP OR PICATINNY RAIL HAND GUARD
- + COMPATIBLE WITH MOST AR-10/LR-308 MODELS AS WELL
- + CONVENIENT ZIPPER AT BOTTOM OF MESH BAG MAKES EMPTYING SIMPLE
- + HEAT RESISTANT MESH WILL NOT MELT
- + LARGE 100 ROUND CAPACITY [.223]

The Caldwell® AR-15 Pic Rail Brass Catcher mounts to any Pic Rail with its quick detach anodized aluminum clamp and captures the ejected brass during firing. The clamp and wire frame are fully adjustable to work with a wide variety of rail/optic configurations and allow brass to enter bag without any disruption to bolt function or cycling. The quick detent locking attachment feature allows for quick installation and removal of the brass catcher; which allows for quick checking or clearing of the rifle chamber. Convenient zipper at bottom of mesh bag makes emptying simple.

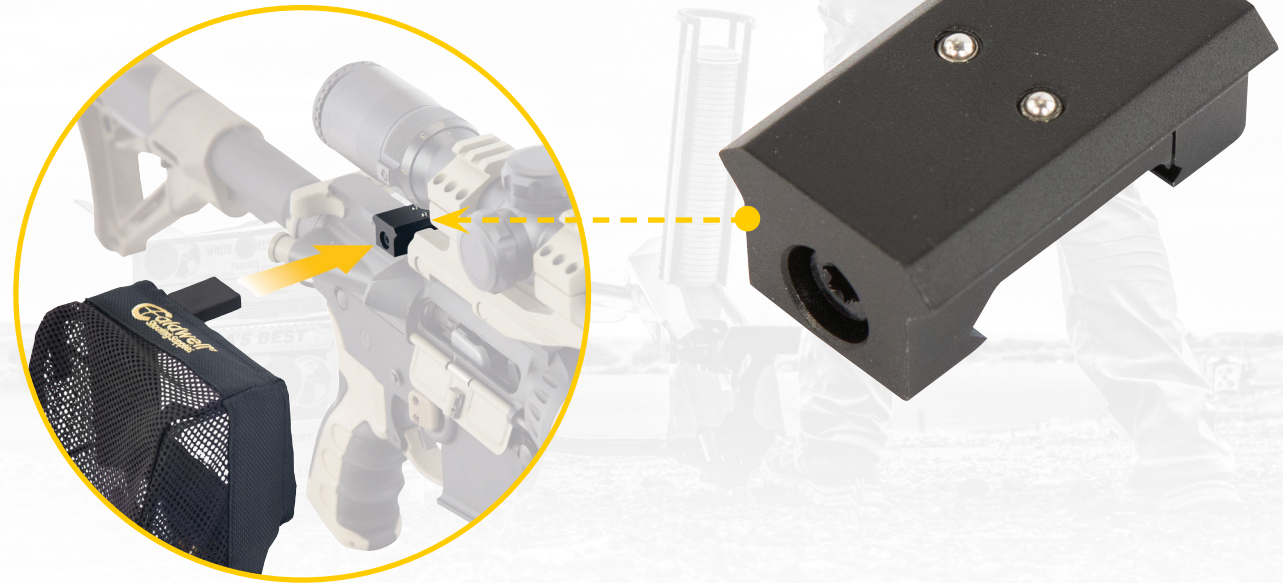


PIC RAIL SPARE MOUNT

PRODUCT# 123904 • UPC# 661120239048

- + WORKS WITH THE CALDWELL PIC RAIL BRASS CATCHER
- + USE EXTRA PIC RAIL MOUNTS TO MAKE SWITCHING BETWEEN RIFLES AN EASY PROCESS
- + MOUNTS TO ANY EXTENDABLE MAGAZINE RIFLE WITH A FLAT TOP OR PICATINNY RAIL HAND GUARD

Put extra pic rail mounts on other guns. That way you can switch your Pic Rail Brass Catcher between rifles quickly and easily.



AR-15 BRASS CATCHER

PRODUCT# 122231 • UPC# 661120222316

- + QUICKLY ATTACHES TO ANY AR-15 USING HOOK AND LOOP WEBBING
- + HOLDS APPROXIMATELY 30 ROUNDS OF SPENT BRASS (.223)
- + WIRE FRAME IS ADJUSTABLE TO FORM IT TO MOST ANY RIFLE
- + HEAT RESISTANT MESH WILL NOT MELT
- + ZIPPER FOR EASY EMPTYING

Tired of picking up brass from your AR? The AR-15 Brass Catcher attaches to the forearm of any AR with hook and loop webbing and captures the ejected brass. It prevents brass from being scattered around your shooting area, and works great in preventing hot brass from landing on shooter or other people next to the shooter. A wire frame holds fabric in correct shape and allows brass to enter bag without disruption to bolt function or interrupting cycling.



MAG CHARGER® AR-15

PRODUCT# 397488 • UPC# 661120222316

- + LOAD AR MAGAZINES IN JUST SECONDS
- + ACCEPTS 50 ROUNDS OF .223, 5.56, .204 OR 300 AAC BLACKOUT LOADED AMMO
- + INSTANT TRANSFER SYSTEM FROM AMMO BOX DIRECTLY TO MAG CHARGER®
- + LOADS 5 ROUNDS PER "STROKE" WITH AUTO ADVANCE

Simply put, the Caldwell AR Mag Charger revolutionizes the way ammo is handled and loaded into AR-15 magazines. It is designed to accept 50 loaded rounds directly from any common 50 round ammo manufacturer box or from aftermarket 50 round plastic storage boxes. Simply align bullet tips and dump a box of ammo into the Mag Charger. The ammo is automatically aligned without touching a single round.



MAG CHARGER® TAC 30

PRODUCT# 397493 • UPC# 661120974932

- + LOAD AR MAGAZINES IN JUST SECONDS
- + ACCEPTS 30 ROUNDS OF .223, 5.56 OR .204
- + TRANSFER DIRECTLY FROM A 20 ROUND BOX
- + LOADS 10 ROUNDS PER "STROKE" WITH AUTO ADVANCE

The Caldwell Mag Charger Tac-30 is designed to directly accept 20 live rounds from any common 20 round ammo manufacturer box and will also conveniently accept up to three 10 round stripper clips. The entire process of filling the Mag Charger Tac-30 with ammo and loading all 20-30 rounds into a magazine takes less than 10 seconds! Spend more time shooting and less time reloading with the Caldwell MagCharger Tac-30!



MAG CHARGER[®] AMMO BOXES

.223/204 AMMO BOXES (5-PACK)

PRODUCT# 397623 • UPC# 661120976233

7.62X39 AMMO BOXES (5-PACK)

PRODUCT# 397480 • UPC# 661120974802

- + OPTIMIZED TO DROP AMMO INTO THE CALDWELL MAG CHARGER
- + LID IS REMOVABLE AND NESTS WITH THE BOTTOM CAVITY
- + DURABLE POLYMER DESIGNED TO BE EXTREMELY TOUGH
- + GREAT FOR LONG TERM STORAGE

The Caldwell AR-15 and AK Mag Charger Ammo Boxes are optimized to drop ammo into the Caldwell Mag Charger. The lid is removable and nests with the bottom cavity. The durable polymer is designed to be extremely tough and is great for long term storage.



MAG CHARGER® UNIVERSAL PISTOL LOADER

PRODUCT# 110002 • UPC# 661120100027

- + UNIVERSAL DESIGN WORKS ON MOST MAGAZINES
- + WORKS WITH BOTH SINGLE-STACK AND DOUBLE-STACK MAGAZINES
- + LOADS 9MM, 10MM, .357 SIG, .40 S&W AND .45 CAL AMMO
- + SIMPLE TO USE - JUST DROP IN A ROUND AND SQUEEZE THE LEVER

The Caldwell Mag Charger Universal Pistol Loader is designed to work with almost all pistol magazines. The Universal Pistol Loader works with both single-stack and double-stack magazines and loads 9mm, 10mm, .380, .357 Sig, .40 S&W and .45 ACP. This magazine loader is simple to use, just drop in a round and squeeze the lever. The adjustable side shims align magazines of any width for optimal use, and are labeled with numbers for quick adjustment.



22LR ROTARY MAG CHARGER®

PRODUCT# 1099117 • UPC# 661120417521

- + HOLDS UP TO 100 ROUNDS OF 22LR AMMO IN THE HOPPER
- + DURABLE POLYCARBONATE CONSTRUCTION
- + FAST AND EASY AMMO LOADING LEAVES MORE TIME FOR SHOOTING
- + HOPPER AUTOMATICALLY ORIENTS AMMO CORRECTLY

The 22LR Rotary Mag Charger revolutionizes the way you load your 10/22 rotary magazines. With this innovative design, you can take loose rounds of ammunition and load your magazine within seconds. The Mag Charger automatically aligns each round. All you do is insert the magazine and twist the plunger loading the ammo until fully loaded.

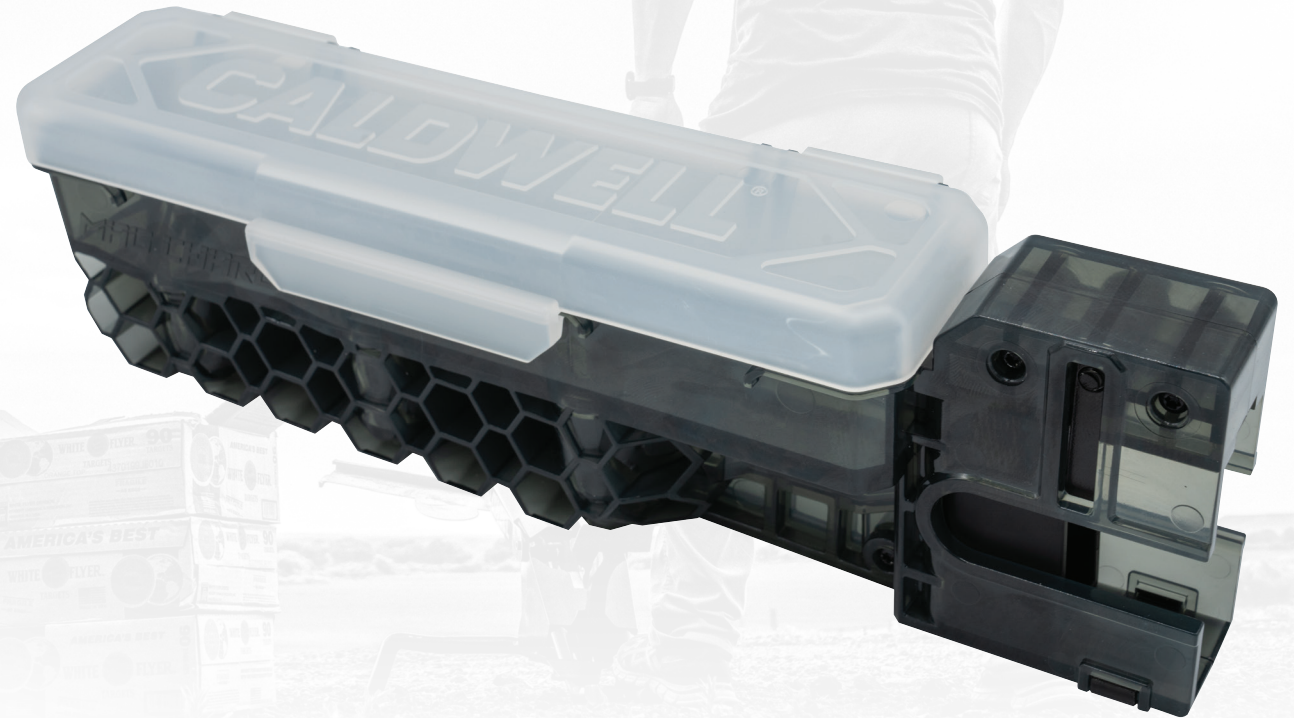


22LR AR-15 22 MAG CHARGER®

PRODUCT# 1097887 • UPC# 661120417873

- + COMPATIBLE WITH ALL POPULAR AR-15 22LR MAGAZINES WITH LOAD ASSIST MAG
- + DURABLE POLYCARBONATE CONSTRUCTION
- + AMMO HOPPER AUTOMATICALLY ORIENTS ROUNDS FOR LOADING
- + EASY HANDHELD OPERATION

The 22LR AR-15 22 Mag Charger revolutionizes the way you load your AR-15 magazines. With this innovative design, you can take loose rounds of ammunition and load your magazine within seconds. The Mag Charger automatically aligns each round. All you need to do is insert the magazine and pull the magazine follower down loading the ammo into the magazine.



FAST CASE GUN COVER

PRODUCT# 110039 • UPC# 661120000464

- + DURABLE BALLISTIC FABRIC WITHSTANDS ABRASION AND TOUGH USE
- + FITS RIFLES OR SHOTGUNS FROM 40"-54" IN LENGTH
- + FOLDS UP INTO A COMPACT SIZE AND FITS IN A PACK
- + PVC LINED FABRIC MAKES CASE WATER RESISTANT

The Caldwell Fast Case Gun Cover protects firearms from all that Mother Nature can throw at them. Durable ballistic fabric stands up to thorns, sticker bushes, or any other abrasive surfaces. The PVC lined fabric provides a water resistance to the firearm in rain and snow. The large bottom opening allows the user to keep the firearm covered but still allows them to carry it with a standard sling. The Caldwell Fast Case is very easy to put on and fast to take off when the shot matters most.



AR MODULAR DUAL POINT SLING KIT

PRODUCT# 156216 • UPC# 661120905011

- + CAN BE USED WITH THE SIDE-RELEASE BUCKLE OR THE SPRING-LOADED CARABINER
- + USE AS A SINGLE POINT SLING OR STANDARD DUAL POINT SLING
- + QUICK DITCH BUCKLE ALLOWS YOU TO UNSLING YOUR AR WITHOUT REMOVING THE SLING
- + AMBIDEXTROUS RECEIVER END PLATE INCLUDED

The AR Modular Dual Point Sling is great for use as a single point sling or detach second spring loaded carabiner and set up as a standard dual point sling. Features premium spring loaded quick detach carabiners and steel ambidextrous receiver plate included. With 2 Quick Ditch buckle options, either use the side release buckle to remove the gun from the sling or use the spring-loaded carabiner to remove the sling from your body.



AR RECEIVER END PLATE SLING MOUNT

PRODUCT# 390501 • UPC# 661120905011

- + AMBIDEXTROUS FOR ALL SHOOTERS
- + ACCEPTS SNAP HOOK STYLE ATTACHMENTS
- + ONE SOLID STEEL PLATE
- + MADE IN THE USA

The Caldwell AR Receiver End Plate Sling Mount offers an ambidextrous sling mount solution for all AR platform firearms. It is constructed from solid steel and accepts snap hook style attachments



SINGLE POINT TACTICAL SLING KIT

PRODUCT# 156215 • UPC# 661120562153

- + AR RECEIVER END PLATE INCLUDED
- + ADJUSTABLE NYLON STRAP WITH QUICK RELEASE BUCKLE
- + ALLOWS SAFE AND CONVENIENT MUZZLE DOWN CARRY POSITION
- + QUICK DETACH CARABINER WITH SAFETY SLEEVE

Single attachment point slings have quickly become the standard for field carry of AR platform guns as well as many other firearms. This heavy duty bungee sling easily attaches to the gun with its steel carabiner clip and the nylon strap with quick release buckle adjusts for length. The gun is held in a safe and convenient muzzle down ready position.



AR-15 MAG COUPLER

PRODUCT# 390504 • UPC# 661120905042

- + CONTAINS 2 COUPLERS TO COUPLE A TOTAL OF 4 MAGAZINES
- + CONTAINS 2 DUST COVERS TO KEEP DUST OUT AND PROTECT BULLET TIPS
- + SAME BASIC PROFILE AS A 30 ROUND MAG TO FIT IN EXISTING MAG POUCHES
- + COUPLES 2 MIL-SPEC STYLE 10 ROUND AR MAGS TOGETHER

The Mag Couplers are made out of high strength polymer to easily couple 2 Mil-Spec Style 10 round AR-15 magazines together and not add weight. The coupling of magazines brings your capacity up to 20 rounds for faster reloads when seconds matter. The coupler is a 2 piece design that is bolted together to be extremely rigid without permanently modifying your magazines. The couplers hold the 2 magazines end to end to maintain the overall shape of a 30 round magazine to fit in all of your existing gun cases, mag pouches, etc.



MAX GRIP SLINGS

BLACK

PRODUCT# 156219 • UPC# 661120562191

FLAT DARK EARTH

PRODUCT# 156214 • UPC# 661120562146

- + MAX GRIP OVERMOLDED DESIGN KEEPS FIREARMS SECURELY IN PLACE WHILE HIKING
- + 2.75" STRAP TO SPREAD THE WEIGHT OF THE FIREARM
- + INCLUDES QUICK DETACH METAL SLING SWIVELS
- + ADJUSTS FROM 20" TO 41" IN LENGTH

The Max Grip Sling's ergonomic shape is designed to spread the weight of the firearm for a comfortable carry. The overmolded design of the material grips your shoulder so the firearm stays put no matter how strenuous your hike is. The sling is completely sealed to be scent free and not take in any moisture as you hunt through all of the elements. If you want a sling that is going to stay put and be comfortable to carry all day, the Caldwell Max Grip is the sling for you!



MAX GRIP SLIM SLINGS

BLACK

PRODUCT# 1131995 • UPC# 661120103592

FLAT DARK EARTH

PRODUCT# 1131996 • UPC# 661120103691

- + MAX GRIP OVERMOLDED DESIGN KEEPS FIREARMS SECURELY IN PLACE WHILE HIKING
- + 1.5" STRAP SPREADS THE WEIGHT OF THE FIREARM WHILE STILL ALLOWING TO FREELY MOVE ARMS
- + INCLUDES QUICK DETACH METAL SLING SWIVELS
- + ADJUSTS FROM 20" TO 41" IN LENGTH

The Max Grip Slim Sling is adjustable from 20" to 41" for full comfort out on the range or on the trails. The non-slip ergonomic design is sure to keep your firearm secure while you're out in the wilderness. With quick detach metal sling swivels, the Max Grip Slim Sling is the easiest and quickest way to keep your firearm secure.



WIND WIZARD II™

PRODUCT# 102579 • UPC# 661120025795

- + WIND SPEED MEASURES IN MPH, FT./MIN, KM/H, M/S OR KNOTS
- + TEMPERATURES DISPLAY IN CELSIUS AND FAHRENHEIT
- + WIND CHILL DISPLAY
- + LCD BACKLIGHT WITH AUTO POWER OFF

The Wind Wizard II has been redesigned to be the best value wind meter on the market and an ideal tool for indicating wind speed. Knowing wind speed gives the shooter the ability to judge shot placement in varying wind conditions. Both compact and portable, this wind meter reads wind and temperature in various units of measure. The non-slip rubber sleeve protects the unit and ensures it's easy to grip even with gloved hands. Operates on one CR2032 battery (included).



CLAY LAUNCHERS

SINGLE THROWER

PRODUCT# 505501 • UPC# 661120055013

DOUBLE THROWER

PRODUCT# 505502 • UPC# 661120055020

- + PORTABLE AND AFFORDABLE HANDHELD CLAY TARGET LAUNCHER
- + WORKS WITH ALL STANDARD SIZE CLAY TARGETS
- + LAUNCHES RIGHT OR LEFT HANDED
- + DOUBLES THROWER FEATURES 2 SINGLE THROWERS MOUNTED TO AN ADAPTER HANDLE

The Clay Launchers are designed to provide hours of shooting entertainment. The one-piece design is simple to use and makes it easy for anyone to throw clay birds. Simply insert the clay target and fling it to send the target sailing. Durable molded plastic construction.



BRASS RETRIEVER

PRODUCT# 125789 • UPC# 661120257899

- + DESIGNED TO MAKE PICKING UP BRASS EXTREMELY EASY
- + WORKS ANYWHERE, EVEN ON GRASS AND GRAVEL
- + TELESCOPING HANDLE TO CUSTOMIZE LENGTH
- + COMES WITH A ROLL CAGE SEPARATOR THAT ALLOWS QUICK BRASS DUMPING

Spend less time bending over and picking up brass at the range and more time shooting. The Brass Retriever picks up brass saving your back and time. Now picking up spent brass is as easy as pushing a mop. The Brass Retriever can pick up rifle and pistol brass quickly and efficiently. The Brass Retriever works any where, even on grass and gravel. The retriever comes complete with a roll cage separator that allows you to dump the collected brass into a bucket quickly. It is collapsible as well, making it convenient to transport to and from the range. Expands from 28" up to 57" tall.



AR500 STEEL TARGETS

- + 3/8" THICK AR500 STEEL
- + RATED UP TO 3,000 FPS IMPACT VELOCITY
- + RATED UP TO 3,500 FT LBS IMPACT ENERGY

Caldwell's bright, easy-to-see targets come in all shapes and sizes for competition, training, and recreational use. Made of AR500 hardened steel, these targets can withstand thousands of rounds. Rated up to a 3,000 fps impact velocity and a 3,500 ft-lb impact energy, these targets come in seven various sizes with three hanging solutions.



5" GONG
PRODUCT# 1116700
UPC# 661120079446



8" GONG
PRODUCT# 1116703
UPC# 661120079460



33% IPSC
PRODUCT# 1116697
UPC# 661120079439



10" COFFIN
PRODUCT# 1116693
UPC# 661120079415



13" OCTAGON
PRODUCT# 1116695
UPC# 661120079422



66% IPSC
PRODUCT# 1116702
UPC# 661120079453



FULL SIZE IPSC
PRODUCT# 1116705
UPC# 661120079477

PORTABLE RANGE KIT WITH 8" AR500 TARGET

PRODUCT# 1140016 • UPC# 661120259985

- + KIT COMES READY TO USE WITH STAND, STRAPS & 8" AR500 STEEL TARGET
- + POWDER COATED STEEL STAND BREAKS DOWN EASILY FOR PORTABILITY
- + HEAVY DUTY XL RUBBER STRAPS ACCOMMODATE DIFFERENT TARGET SIZES
- + PEACE OF MIND WITH LIFETIME WARRANTY ON AR500 TARGET

The Portable Range Kit with 8" AR500 Target combines the Caldwell AR500 Steel with the classic setup of the Caldwell Gong Target system. This set includes everything you need for a great day at the range - an 8" AR500 Steel Target that will withstand thousands of rounds, a collapsible steel stand for easy transport, and our XL Strap Hangers to hold up your target.



PORTABLE TARGET STAND WITH STRAPS

PRODUCT# 1136057 • UPC# 661120259947

- + POWDER COATED STEEL STAND BREAKS DOWN EASILY FOR PORTABILITY
- + INCLUDED HEAVY DUTY XL RUBBER STRAPS ACCOMMODATE DIFFERENT TARGET SIZES

The Caldwell Portable Target Stand with Straps combines the durable XL Target Straps and collapsible steel stand to support all your favorite Caldwell AR500 Steel targets. The XL Target Straps are built to withstand repeated direct bullet impact and the stand easily collapses and stores compactly for easy transport to and from the range.



*Target Not Included

AR500 GAME SERIES

- + HEAVY-DUTY 3/8" AR500 STEEL RATED FOR CENTERFIRE RIFLE USE
- + SELECTION OF POPULAR GAME ANIMAL SILHOUETTES ADD VARIETY AND UNIQUE TARGET SHAPES
- + YELLOW POWDER COAT FINISH FOR HIGH VISIBILITY DOWNRANGE
- + PEACE OF MIND WITH A LIFETIME GUARANTEE ON ALL AR500 TARGETS

Caldwell's Game Series AR500 Steel Targets come in 4 different popular game silhouettes for competition, practice, and recreational use. Constructed using 3/8" AR500, the finest rifle rated target steel available on the market, capable of withstanding thousands of rounds. 1/2" x 1" center slot is compatible with the Caldwell AR500 Target Post. These targets are rated up to 3,000 fps impact velocity, 3,500 ft-lb impact energy and are covered by a lifetime guarantee.

AR500 COYOTE TARGET

PRODUCT# 4001073 • UPC# 661120747437

AR500 33% DEER TARGET

PRODUCT# 4001096 • UPC# 661120747420

AR500 CROW TARGET

PRODUCT# 4001093 • UPC# 661120747444

AR500 PRAIRIE DOG TARGET

PRODUCT# 4001099 • UPC# 661120747468



AR500 TARGET POST

PRODUCT# 4001137 • UPC# 661120747475

- + AR500 CONSTRUCTION CAN WITHSTAND IMPACTS FROM CENTERFIRE RIFLES
- + SPIKE-LEG DESIGN CREATES FOR QUICK AND EASY SET UP
- + 2 PIECE DESIGN FOR TRANSPORTATION AND STORAGE

The Caldwell AR500 Target Post is the strongest target hanger on the market. Constructed using the same 3/8" AR500 rifle rated steel as our targets, capable of withstanding thousands of rounds. Compact 2-piece design for easy transportation with a replaceable AR500 hook that works with all targets with a 1/2" x 1" slot. Assembled length of 70" supports targets up to 50 lbs.



AR500 DUAL SPINNER TARGET

PRODUCT# 1196226 • UPC# 661120747451

- + HEAVY-DUTY 3/8" AR500 STEEL RATED FOR CENTERFIRE RIFLE USE
- + SPINNING TARGET DESIGN IS FUN AND CHALLENGING
- + 5" AND 8" PLATES ARE THE PERFECT SIZE FOR BOTH RIFLE AND HANDGUN USE
- + COLLAPSIBLE STAND MAKES FOR EASY SETUP, TAKEDOWN AND STORAGE
- + PEACE OF MIND WITH A LIFETIME GUARANTEE ON AR500 TARGETS

The Caldwell AR500 Dual Spinner Target includes everything you need for a great day at the range. Featuring dual 5" and 8" AR500 steel targets that are capable of withstanding thousands of rounds and a collapsible steel stand for easy transport. The dual spinning targets offer a fun and challenging target for competition, plinking, or training. Perfect for centerfire rifles and handguns, these targets are rated up to 3,000 fps impact velocity and 3,500 ft-lb impact energy.



AR500 SWINGING TARGET

PRODUCT# 1187590 • UPC# 661120652625

- + 3/8" AR500 CONSTRUCTION CAN WITHSTAND IMPACTS FROM CENTERFIRE RIFLES
- + EXTREMELY DURABLE CAST URETHANE FRAME CONNECTORS PROVIDE A RIGID FRAME YET ALLOWS BULLETS TO PASS RIGHT THROUGH
- + SOLID STEEL LEGS AND CROSSBAR PROVIDE A RIGID FRAME BUT CAN BE REPLACED BY 1/2" REBAR IF DAMAGED
- + PEACE OF MIND WITH A LIFETIME GUARANTEE ON AR500 TARGET

The Caldwell AR500 Swinging Target is constructed using 3/8" rifle rated AR500 steel. The extremely durable cast urethane frame connectors provide a rigid frame yet allows bullets to pass through without damage. The solid steel legs and crossbar provide a rigid frame that can be replaced by 1/2" rebar if damaged. The target frame is 18" off the ground and 10" to the center of the target. The AR500 Swinging Target is highly portable for ease of use. 4 ground stakes are included to secure the target for large rifle impacts. Perfect for centerfire rifles and handguns, these targets are rated up to 3,000 fps impact velocity and 3,500 ft-lb impact energy.



ULTIMATE STEEL TARGET STAND

PRODUCT# 4001148 • UPC# 661120747536

- + DUAL PURPOSE DESIGN HOLDS 1X2 OR 2X4 FOR BOTH STEEL AND PAPER TARGET USE
- + ANGLED 2X4 HOLDS UP TO FULL-SIZE IPSC TARGET WITHOUT FALLING OVER
- + 1X2 STAKE POCKETS FOR COMMON PAPER/CARDBOARD TARGETS

Ultimate Steel Target Stand can be used to set both steel and paper targets on almost any range. The H-stand design allows flexibility in target setup without driving posts or stakes into the ground. The angled center 2x4 pocket can be combined with the Caldwell 2x4 Plate Hanger (sold separately) to hang any Caldwell AR500 steel, including full size IPSC targets on any 2x4 post. The 1x2 stake pockets are perfect for setting up paper or cardboard targets at any distance. Comes with 2 ground stakes.

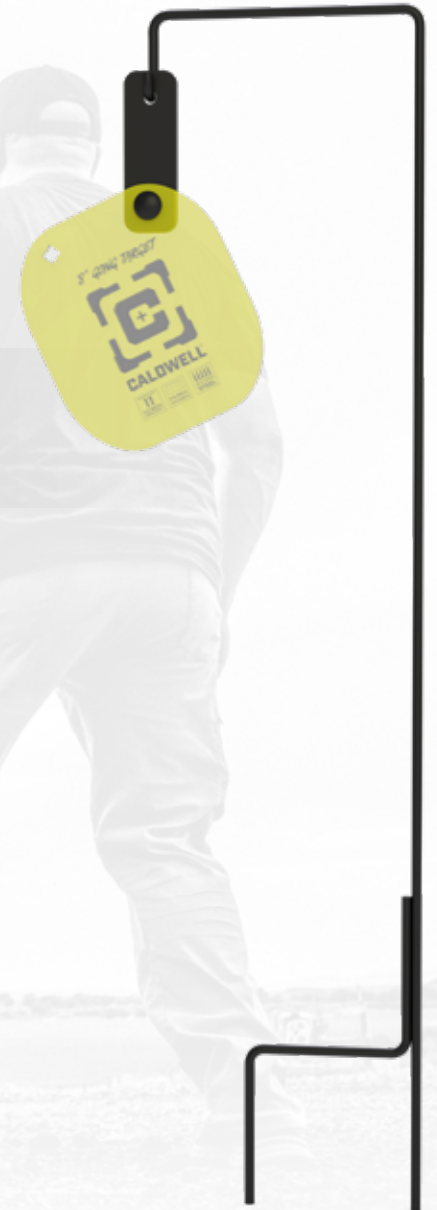


SHEPHERD'S HOOK STEEL TARGET HANGER

PRODUCT# 3002281 • UPC# 661120652175

- + QUICK & EASY LIGHTWEIGHT DESIGN FOR CONVENIENT TARGET HANGING
- + DURABLE STEEL FRAME HOLDS UP TO A 16 LB STEEL TARGET
- + INCLUDED NYLON REINFORCED RUBBER STRAP REDUCES FATIGUE ON STEEL FRAME

Caldwell's Shepherd's Hook Target Hangers are a quick and easy target hanging solution for any range. A nylon reinforced rubber strap means these hangers won't fatigue with extended shooting like traditional wire shepherd's hooks. This extremely durable stand comes in at 45" tall and can hold up to a 16 lb steel target (equivalent to our 13" AR500 Octagon target). Upgrade your range with a Caldwell Shepherd's Hook!



*Target Not Included

FLASH BANG TARGET HIT INDICATOR

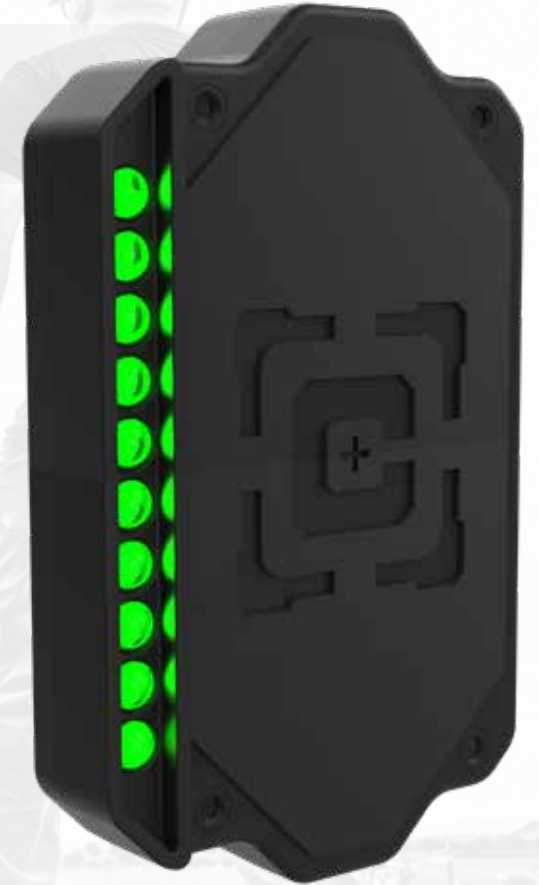
PRODUCT# 1198772 • UPC# 661120747529

- + 10 FLASHING LED LIGHTS NOTIFY SHOOTER OF AN IMPACT AT EXTENDED RANGES
- + LOW IMPACT ENERGY DETECTION EASILY DETECTS .223 HITS AT 1,000 YARDS
- + VERSATILE, COMPACT DESIGN WORKS ON MOST STEEL TARGETS OVER 5"

The Caldwell Flash Bang Target Hit Indicator brings new feedback to shooters when using steel targets. Flashing green LED lights are triggered by an impact on the target telling shooters of their hits at extremely long ranges where confirmed hits can be difficult. The self-contained unit features 10 ultra-bright green LED lights that are visible for thousands of yards, even in bright daylight conditions. Powered by 3 "AA" batteries (included), the Flash Bang has a battery life of over 5,000 impacts. The Flash Bang is compatible with targets over 5" and attaches easily with heavy-duty hook and loop material.



[66% IPSC TARGET]



STRAP PLATE HANGER SET

PRODUCT# 1102671 • UPC# 661120075721

- + 12" LONG STRAPS
- + HIGH STRENGTH REINFORCED RUBBER CONSTRUCTION WITHSTANDS MULTIPLE BULLET IMPACTS
- + MOUNTING HARDWARE INCLUDED

The Caldwell Strap Plate Hanger Set is a perfect fit piece for hanging your Caldwell Steel Target. The Strap Plate Hanger is extremely easy to use and has a high-quality construction. To use the Strap Plate Hanger Set simply secure the straps to your favorite stand using the high-quality steel screws. Next, attach the Strap Plate Hanger to your favorite Caldwell Steel Target and you're all set!



XL TARGET STRAPS

PRODUCT# 1136058 • UPC# 661120259954

- + 21" LONG STRAPS
- + MULTIPLE MOUNTING HEIGHT OPTIONS
- + HIGH STRENGTH REINFORCED RUBBER CONSTRUCTION WITHSTANDS MULTIPLE BULLET IMPACTS
- + MOUNTING HARDWARE INCLUDED

Caldwell XL Target Straps are made of durable nylon-enforced rubber that are able to withstand plenty of direct bullet impacts. Designed to support all of Caldwell's AR500 steel targets, these straps are also adjustable for precise height adjustment.



AR500 STEEL PLATE HANGERS

T-POST PLATE HANGER

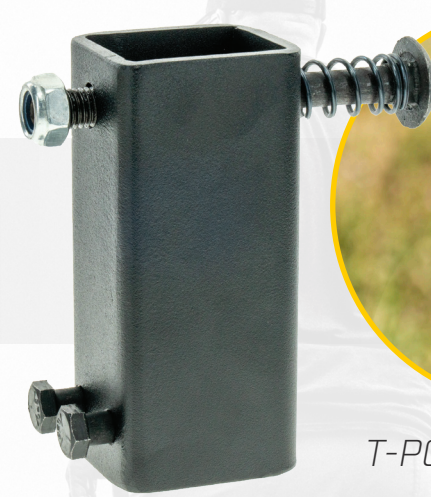
PRODUCT# 1102669 • UPC# 661120075707

2X4 PLATE HANGER

PRODUCT# 1102670 • UPC# 661120075714

- + STEEL ACCESSORY FOR HANGING AR500 STEEL ON T-POST STANDS.
- + STEEL ACCESSORY FOR HANGING AR500 STEEL ON 2X4 STANDS.
- + CALDWELL AR500 STEEL ON ANY 2X4 POST YOU'RE USING ON THE RANGE.
- + HARDWARE INCLUDED

Steel plate hanger accessory that enables you to hang your favorite Caldwell AR500 steel on any T-post you're using on the range. Easily attaches to top of T-post with included hardware for hanging any of our Caldwell AR500 steel targets.



T-POST PLATE HANGER



2x4 PLATE HANGER

AR500 AUTO RESET TARGETS

AR500 33% PEPPER POPPER TARGET

PRODUCT# 1178560 • UPC# 661120265627

AR500 PRAIRIE DOG TARGET

PRODUCT# 1178561 • UPC# 661120265634

- + HEAVY-DUTY 3/8" AR500 STEEL RATED FOR CENTERFIRE RIFLE USE
- + AUTOMATIC SPRING RESET ELIMINATES NEED TO GO DOWN RANGE & ALLOWS FOR INSTANT FEEDBACK
- + 7" ELEVATED STAND PROVIDES QUICK & EASY SETUP
- + PEACE OF MIND WITH LIFETIME WARRANTY ON AR500 TARGET

Add some fun interactive targets to your range with these Caldwell AR500 Auto Resetting Targets. Constructed using AR500, the finest rifle rated target steel available on the market. Each target includes a free-standing frame, popper, or prairie dog shape AR500 target and ground stakes. The base of the frame sits 7-inches off the ground. When the target is struck with a bullet it falls backward and is automatically reset with the integrated reset spring. For maximum life expectancy impact velocities of 3,000 fps or below and impact energies of 3,500 ft. lbs. or less are recommended.



AR500 DEALER KITS

HALF-SIZE DISPLAY KIT

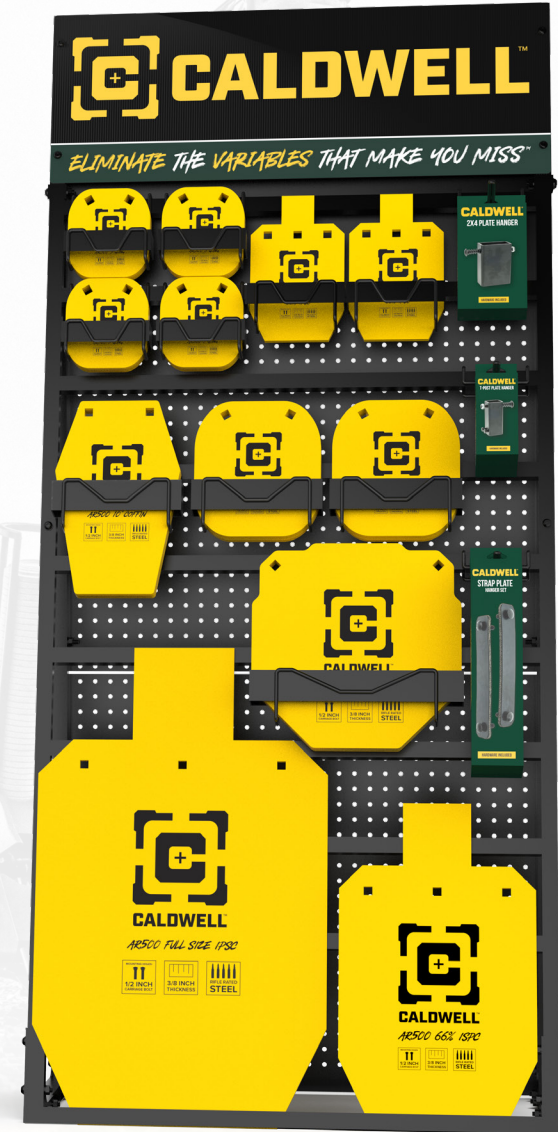
PRODUCT# 1182824 • UPC# 661120651475

Product#	Description	Qty
1102669	T-POST PLATE HANGER	6
1102670	2X4 PLATE HANGER	6
1102671	STRAP PLATE HANGER SET	6
1116693	AR500 10" COFFIN	4
1116697	AR500 33% IPSC TARGET	8
1116700	AR500 5" CALDWELL C	12
1116702	AR500 66% IPSC TARGET	2
1116703	AR500 8" CALDWELL C	6
1134868	5" PLATE HOLDER	2
1134870	8" PLATE HOLDER	2
1134871	33% IPSC PLATE HOLDER	2
1134873	PEG HANGER STEEL DISPLAY	4
1181704	SMALL AR500 DISPLAY	1

FULL-SIZE DISPLAY KIT

PRODUCT# 1183600 • UPC# 661120651482

Product#	Description	Qty
1102669	T-POST PLATE HANGER	6
1102670	2X4 PLATE HANGER	6
1102671	STRAP PLATE HANGER SET	6
1116693	AR500 10" COFFIN	4
1116695	AR500 13" OCTAGON	3
1116697	AR500 33% IPSC TARGET	8
1116700	AR500 5" CALDWELL C	18
1116702	AR500 66% IPSC TARGET	2
1116703	AR500 8" CALDWELL C	6
1116705	AR500 FULL SIZE IPSC TARGET	1
1133881	AR500 STEEL TARGET DISPLAY	1
1134868	5" PLATE HOLDER	4
1134870	8" PLATE HOLDER	3
1134871	33% IPSC PLATE HOLDER	2
1134872	13" PLATE HOLDER	1
1134873	PEG HANGER STEEL DISPLAY	3
1134878	PEG BOARD HANGER W/ SCAN HOOK	12



RESETTING TARGETS

AIRGUN TARGET

PRODUCT# 820585 • UPC# 661120205852

.22 RIMFIRE TARGET

PRODUCT# 902365 • UPC# 661120023654

HANDGUN TARGET

PRODUCT# 1071002 • UPC# 661120036548

- + EASILY PORTABLE
- + MADE OF HEAVY DUTY STEEL
- + SWINGING BOTTOM TARGETS
- + SHOOT TOP TARGET TO RESET BOTTOM ROW



AIRGUN TARGET
Dimensions. 11.5"W x 15"H x 1"D



.22 RIMFIRE TARGET
Dimensions. 16.8"W x 22.5"H x 1.8"D



HANDGUN TARGET
Dimensions. 12"W x 26.8"H x 1.8"D

PLINK N' SWING ACTION TARGETS

.22 RIMFIRE TRIPLE SPIN

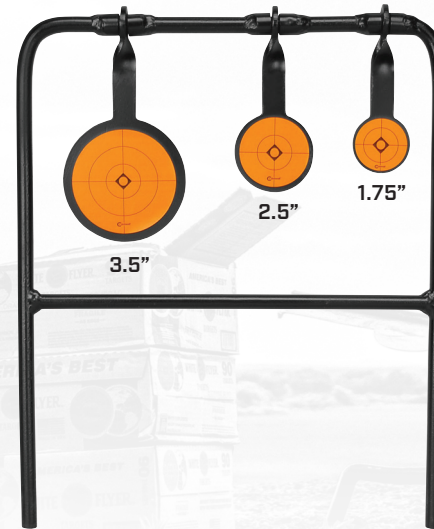
PRODUCT# 147072 • UPC# 661120470724

CENTERFIRE HANDGUN DOUBLE SPIN

PRODUCT# 133565 • UPC# 661120335658

- + SWINGERS AND FRAMES ARE MADE OF DURABLE STEEL FOR LONG LIFE
- + AUDIBLE FEEDBACK MAKES SHOOTING FUN FOR ALL AGES

Shooting is just plain fun when you can see and hear the impact of your bullets. Next time you go to the range, take the Caldwell® Plink N' Swing™ Targets to bring fun and fast action back to your shooting.



.22 RIMFIRE TRIPLE SPIN



CENTERFIRE HANDGUN DOUBLE SPIN

MAGNUM TARGET CARRY BAG

PRODUCT# 894050 • UPC# 661120940500

- + INNER COMPARTMENTS FOR GONG, GROUND STAKES, CHAINS AND OTHER COMPONENTS
- + HEAVY DUTY CONSTRUCTION

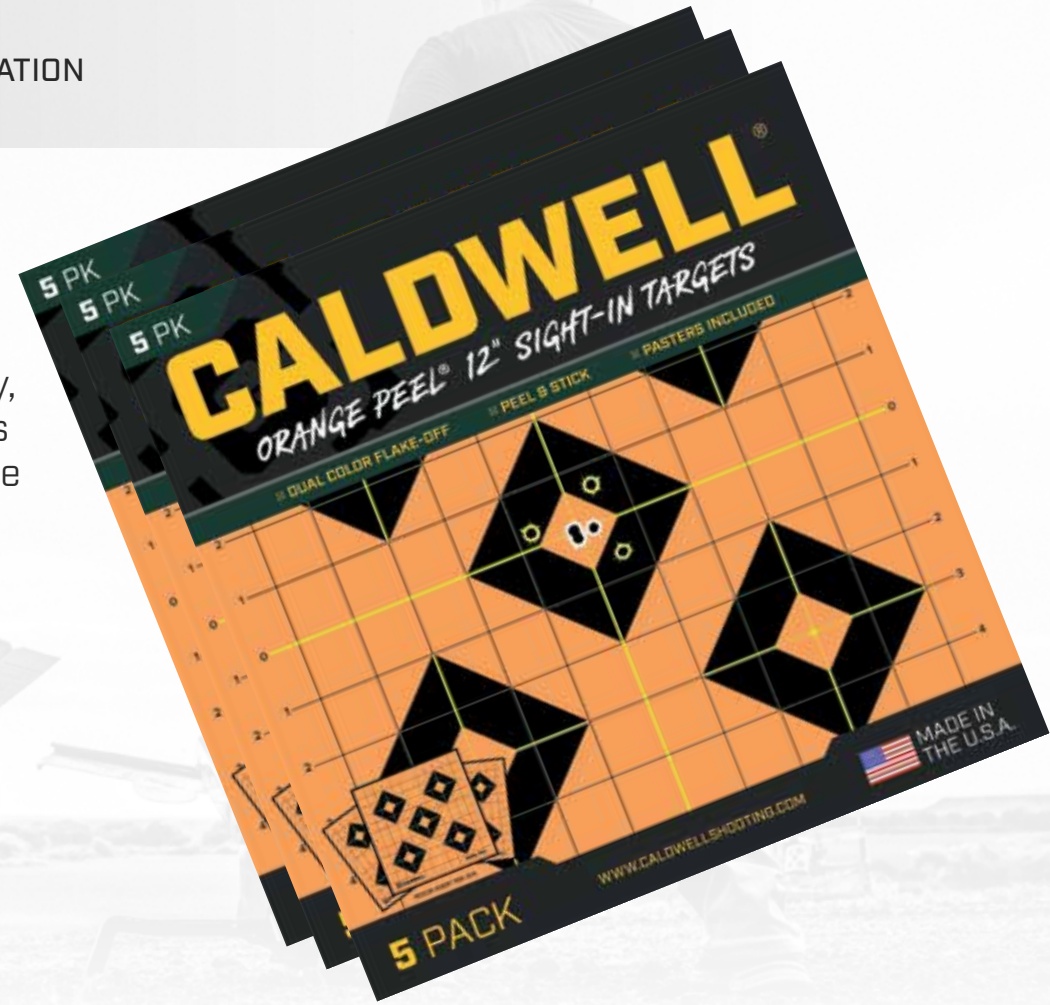
The Magnum Target Carry Bag is designed to transport and store the Caldwell Portable Range Kit & AR500 Dual Spinner Target. Heavy duty construction and internal compartments keep target components protected and organized



ORANGE PEEL® TARGETS

- + DUAL COLOR FLAKE-OFF DESIGN MAKES FOR EASY SHOT DETECTION
- + ADHESIVE BACKED - NO STAPLES OR CLIPS REQUIRED
- + MULTIPLE SIZES & DESIGNS PROVIDE THE PERFECT TARGET FOR ANY SITUATION
- + EXTENDED TARGET LIFE WITH INCLUDED REPAIR PASTERS

Caldwell Orange Peel Targets let you see hits on the target with dual color flake-off technology that makes your hits look like colorful explosions. If your shot happens to miss the bullseye, you will know exactly where your bullet strayed instantly. The high contrast orange background and black target make acquisition through the scope easy, even at long distances. No need for staples or push pins, these targets feature an adhesive back that sticks to almost any surface. Pastes are included in each pack to repair the targets for even more use.



5.5" BULLSEYE TARGET - 10PK
 PRODUCT# 1166107 • UPC# 661120652045

5.5" BULLSEYE TARGET - 25PK
 PRODUCT# 1166108 • UPC# 661120652052

8" BULLSEYE TARGET - 5PK
 PRODUCT# 1166109 • UPC# 661120652076

8" BULLSEYE TARGET - 25PK
 PRODUCT# 1166110 • UPC# 661120652089

8" SIGHT-IN TARGET - 5PK
 PRODUCT# 1166102 • UPC# 661120652090

8" SIGHT-IN TARGET - 25PK
 PRODUCT# 1166103 • UPC# 661120652083

12" TURKEY TARGET - 5PK
 PRODUCT# 1175518 • UPC# 661120652168

12" BULLSEYE TARGET - 5PK
 PRODUCT# 1166111 • UPC# 661120651994

12" BULLSEYE TARGET - 25PK
 PRODUCT# 1166112 • UPC# 661120652199

12" SIGHT-IN TARGET - 5PK
 PRODUCT# 1166104 • UPC# 661120652021

12" SIGHT-IN TARGET - 25PK
 PRODUCT# 1166105 • UPC# 661120652007

12" X 18" SILHOUETTE TARGET - 5PK
 PRODUCT# 1175517 • UPC# 661120652151

16" SIGHT-IN TARGET - 5PK
 PRODUCT# 1166106 • UPC# 661120652038

patents: aob.com/patents

ORANGE PEEL® DISPLAYS

COUNTERTOP DEALER KIT

PRODUCT# 1200354 • UPC# 661120747598

Product#	Description	Qty
1196197	COUNTERTOP ORANGE PEEL TARGET DISPLAY	1
1166107	5.5" ORANGE PEEL BULLSEYE TARGET - 10 SHEETS	40
1166102	8" ORANGE PEEL SIGHT-IN TARGET - 5 SHEETS	40
1166109	8" ORANGE PEEL BULLSEYE TARGET - 5 SHEETS	20
1166104	12" ORANGE PEEL SIGHT-IN TARGET - 5 SHEETS	20
1166111	12" ORANGE PEEL BULLSEYE TARGET - 5 SHEETS	20
1175522	12"X18" CENTER MASS SILHOUETTE TARGET - 8 SHEETS	10
1175517	12"X18" ORANGE PEEL BULLSEYE TARGET - 5 SHEETS	10

FREE-STANDING DEALER KIT

PRODUCT# 1200349 • UPC# 661120747604

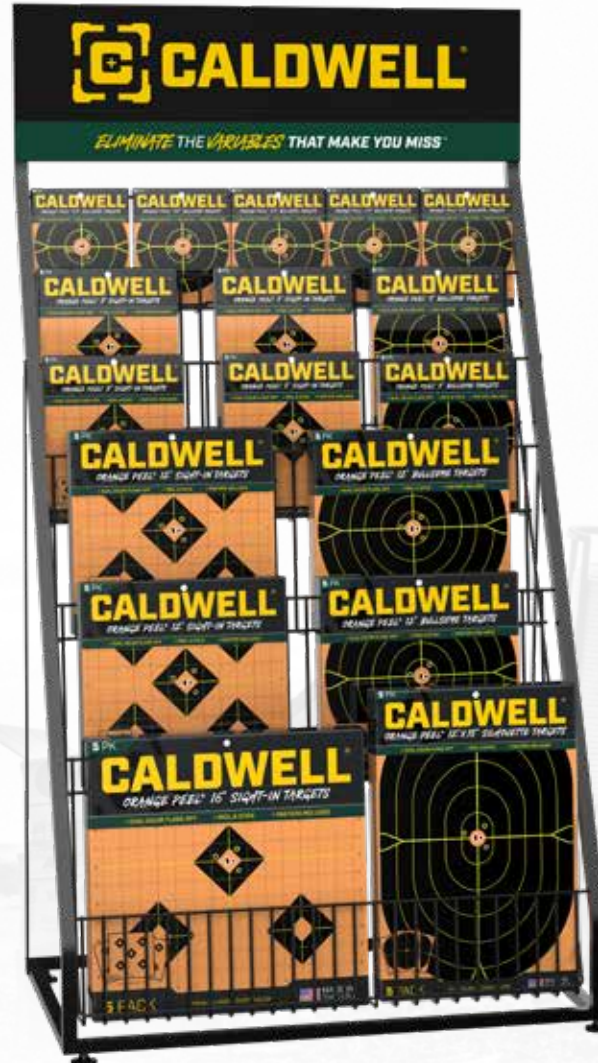
Product#	Description	Qty
1196196	FREE STANDING ORANGE PEEL TARGET DISPLAY	1
1166107	5.5" ORANGE PEEL BULLSEYE TARGET - 10 SHEETS	40
1166102	8" ORANGE PEEL SIGHT-IN TARGET - 5 SHEETS	20
1166109	8" ORANGE PEEL BULLSEYE TARGET - 5 SHEETS	40
1166104	12" ORANGE PEEL SIGHT-IN TARGET - 5 SHEETS	30
1166111	12" ORANGE PEEL BULLSEYE TARGET - 5 SHEETS	30
1166106	16" ORANGE PEEL SIGHT-IN TARGET - 5 SHEETS	20
1175517	12"X18" ORANGE PEEL BULLSEYE TARGET - 5 SHEETS	20

COUNTERTOP DISPLAY ONLY

PRODUCT# 1196197 • UPC# 661120747505

FREE-STANDING DISPLAY ONLY

PRODUCT# 1196196 • UPC# 661120747512



Size: 32"W x 60"H x 25"D



Size: 26"W x 25"H x 13"D

SILHOUETTE DUAL ZONE TARGETS

8 PACK

PRODUCT# 1175523 • UPC# 661120652144

- + HI VISIBILITY FLAKE OFF TECHNOLOGY
- + IDEAL FOR DEFENSIVE SHOOTING SKILL DEVELOPMENT
- + HEAVY CARD STOCK PAPER
- + 12" X 18" TARGET SIZE

The Silhouette Dual Zone Targets are perfect for honing your defensive shooting skills. They feature high visibility flake off technology making it easy to see bullet impact. The target has 2:1 size ratio (target at 5 yards represents 6' tall target at 10 yards)



SILHOUETTE CENTER MASS TARGETS

8 PACK

PRODUCT# 1175522 • UPC#661120652137

- + HI VISIBILITY FLAKE OFF TECHNOLOGY
- + IDEAL FOR DEFENSIVE SHOOTING SKILL DEVELOPMENT
- + HEAVY CARD STOCK PAPER
- + 12" X 18" TARGET SIZE

The Silhouette Center Mass Targets are perfect for honing your defensive shooting skills. They feature high visibility flake off technology making it easy to see bullet impact. The target has 2:1 size ratio (target at 5 yards represents 6' tall target at 10 yards)



HIGH CONTRAST PAPER TARGETS

BLUE 9-DIAMOND SIGHT-IN TARGET

PRODUCT# 1175519 • UPC# 661120652106

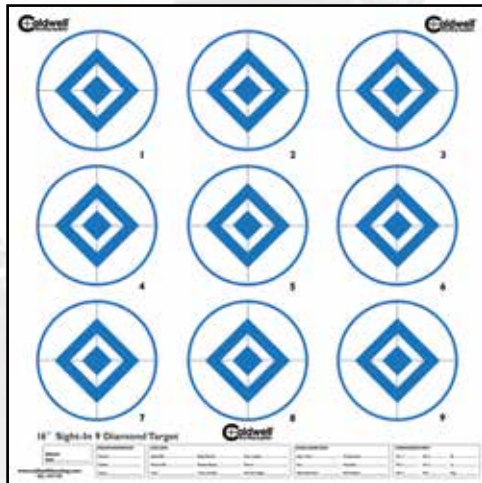
DIAMOND SIGHT-IN TARGET

PRODUCT# 1175521 • UPC# 661120652113

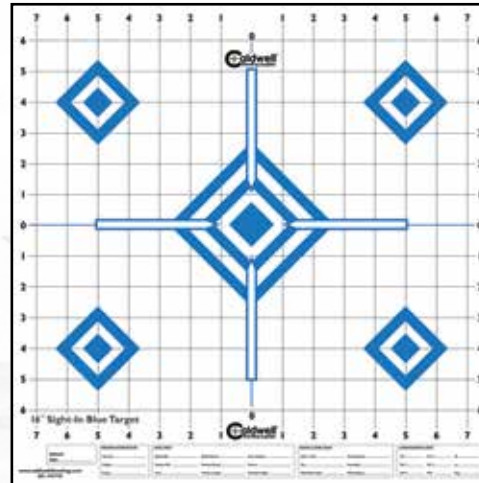
BULLSEYE SIGHT-IN TARGET

PRODUCT# 1175520 • UPC# 661120652120

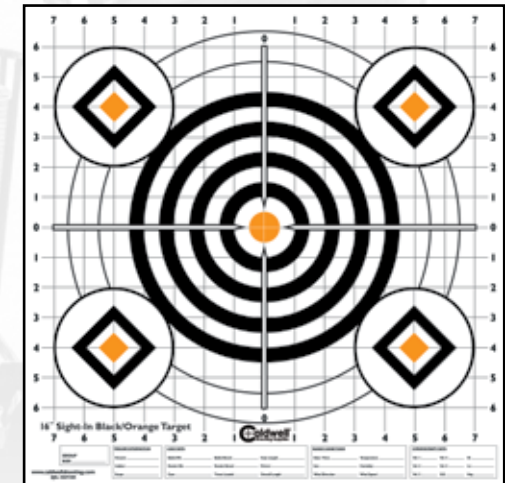
- + 10 PER PACKAGE
- + HIGH VISIBILITY COLOR TO SEE AT LONG RANGES
- + DIAMOND SHAPED TARGETS FOR EASY CROSSHAIR ALIGNMENT
- + 1" GRID FOR SIMPLE SCOPE ADJUSTMENTS
- + LARGE 16"X16" TARGET SIZE TO HELP GET ON PAPER



BLUE 9-DIAMOND SIGHT-IN TARGET



DIAMOND SIGHT-IN TARGET



BULLSEYE SIGHT-IN TARGET

TARGET TURNER

PRODUCT# 1096103 • UPC# 661120417538

- + PRESENTS & HIDES TARGET FOR INTERACTIVE SHOOTING & TRAINING
- + VERSATILE DESIGN ACCEPTS ALL IDPA, IPSC, & NRA ACTION PISTOL CARDBOARD TARGETS
- + QUICKLY COLLAPSES INTO INCLUDED CARRY BAG FOR EASY TRANSPORT
- + 8 AA BATTERIES PROVIDE 8 HOURS OF RUNTIME FOR ALL DAY SHOOTING

The Target Turner sets the bar for a user-friendly interactive targeting system. The electronically operated Target Turner rotates 90°, back and forth, at user-adjustable speeds, making it the perfect interactive target. Featuring a low center of gravity and durable polymer and powder-coated steel construction, the Target Turner will give you years of reliable service, even in windy or wet conditions. Whether you're having fun in the backyard or you take your training seriously, the target turner will help refine your skills as a marksman.



**Target Not Included*

ULTIMATE TARGET STAND

PRODUCT# 707055 • UPC# 661120070559

- + FRAME ARMS ARE CONSTRUCTED OF DURABLE STEEL ROD
- + FRAME COLLAPSES FOR EASY TRANSPORT
- + BUILD-IN STORAGE HOLDS RANGE SUPPLIES
- + BACKER HOLDS UP TO (2) 16"X16" TARGETS

The Ultimate Target Stand features an oversized backer to hold multiple large targets and is constructed of an all-weather moisture resistant material. The large size makes sighting in easy, no more bullets missing the target. The frame arms are constructed of durable steel rod and hold the backer securely in place. Removable ground stabilizer adds support from wind during use and conveniently stows onto the feet.

REPLACEMENT BACKER (2-PACK)

PRODUCT# 707100 • UPC# 661120071006

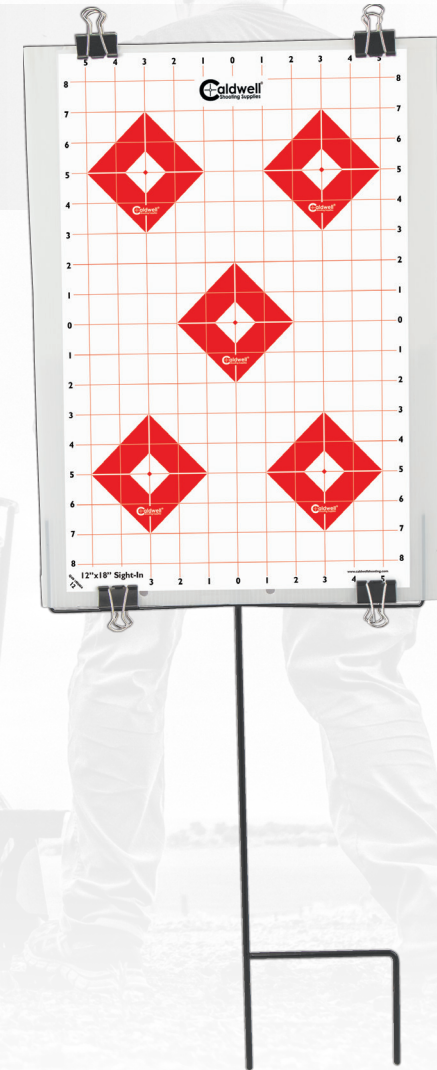


ULTRA PORTABLE TARGET STAND KIT

PRODUCT# 110005 • UPC# 661120100058

- + EXTRA LARGE BACKER CAN HOLD 12"X18" TARGETS
- + GREAT FOR SIGHTING IN OR PATTERNING
- + COLLAPSES FOR EASY TRANSPORT
- + INCLUDES 8 SILHOUETTE TARGETS AND 8 HIGH CONTRAST SIGHT-IN TARGETS

The Ultra Portable Target Stand Kit is your all-in-one target kit for the range! This compact set up includes a stand, backer, clamps and targets all in one package. The stand, clamps and backer are reusable and easy to assemble. This kit packs down to 12" x 18" for easy transport.



DURAMAX™ SELF-HEALING TARGETS

5" BALL

PRODUCT# 897602 • UPC# 661120976028

5" SQUARE

PRODUCT# 897597 • UPC# 661120975977

- + MADE OF BALLISTIC POLYMER FOR MAXIMUM DURABILITY
- + TARGETS ARE SELF-HEALING SO YOU CAN SHOOT THEM THOUSANDS OF TIMES
- + RATED FOR PISTOLS OR RIFLES FROM .22LR ALL THE WAY UP TO 50 BMG
- + REACTIVE TARGETS; BOUNCES, ROLLS, SPINS OR FLIPS WHEN HIT

The Caldwell Duramax Self Healing Targets are made of ballistic polymer for maximum durability. The targets are self-healing and can be shot thousands of times. The Duramax Self Healing targets are rated for pistols or rifles from .22lr all the way up to 50 BMG. These reactive targets bring a whole new level of fun to the range. Watch them bounce, roll, spin, and flip when hit.

